



# **Southern Sandoval County Arroyo Flood Control Authority (SSCAFCA)**

Black Arroyo Wildlife Park

Draft Master Plan

May 13, 2013



# Black Arroyo Wildlife Park

- The purpose of the Master Plan:
  - Flood Control (Green Infrastructure)
  - Safe Pedestrian Access with respect to flooding
  - Alternative uses (i.e. open space)
  - Arid Land Protection/Restoration
  - Educational/Recreational Opportunities



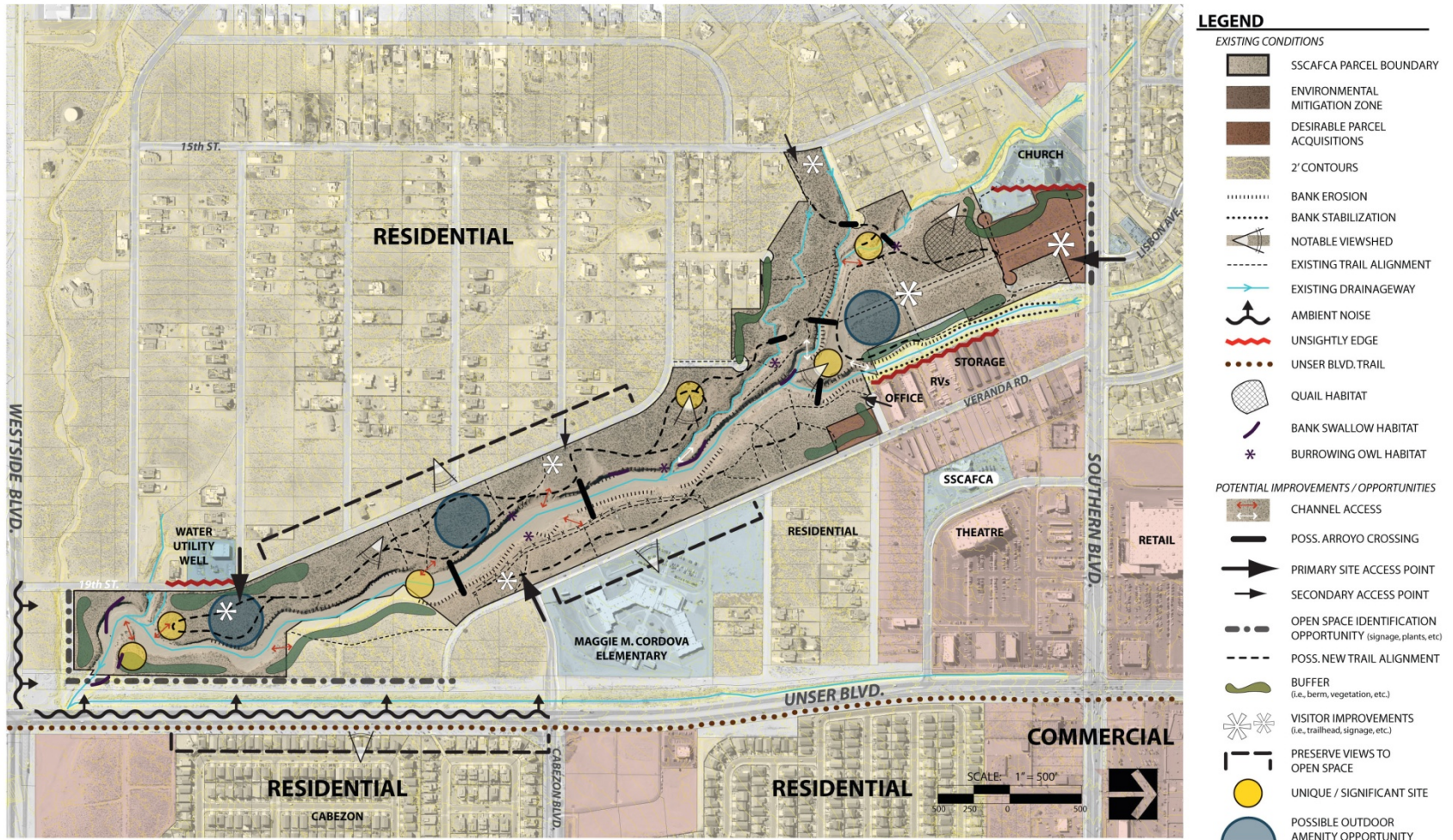






# Black Arroyo Wildlife Park

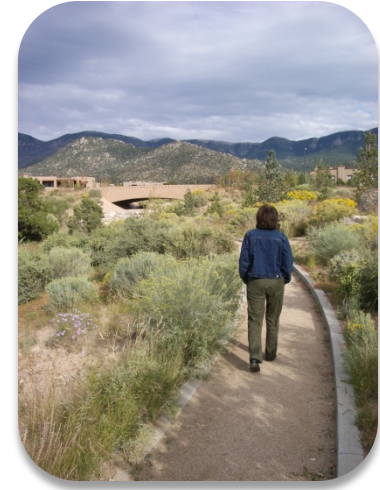
## Opportunities and Constraints



**BLACK ARROYO - OPPORTUNITIES & CONSTRAINTS MAP**

# Black Arroyo Wildlife Park Master Plan

- Overall Concepts
  - Natural Drainage Management
  - Trails
    - Commuter Trail Links
    - Internal Recreational and Wildlife Trails
  - Bridges and Arroyo Crossings
  - Informational and Interpretive Signage
  - Passive Play (for Maggie Cordova School)
  - Water Harvesting/Habitat Enhancement
  - Access Control





# Black Arroyo Wildlife Park Draft Master Plan

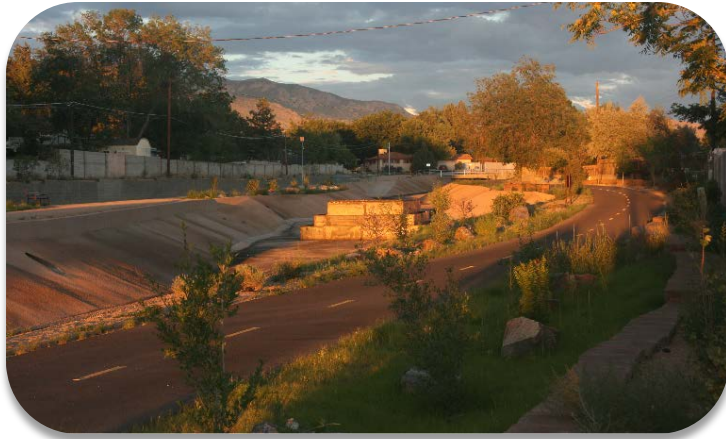
- Concepts for arroyo crossings



# Black Arroyo Wildlife Park

## Draft Master Plan

- Concepts for trails
  - Two levels of trail improvements:



commuter



natural

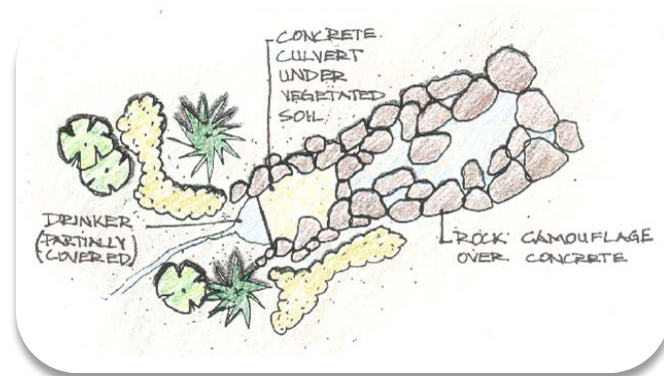
# Black Arroyo Wildlife Park

## Draft Master Plan

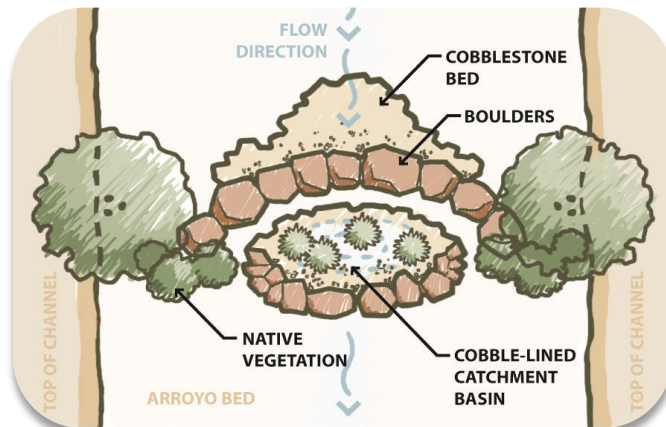
- water harvesting and wildlife enhancement



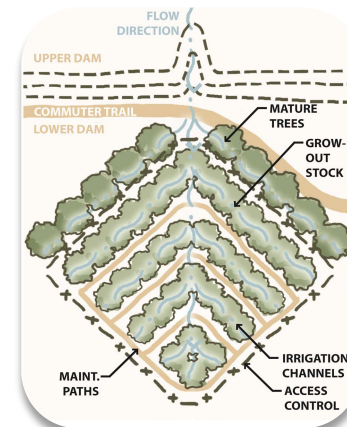
Wildlife drinker



Wildlife drinker



"Zuni bowl" water harvesting

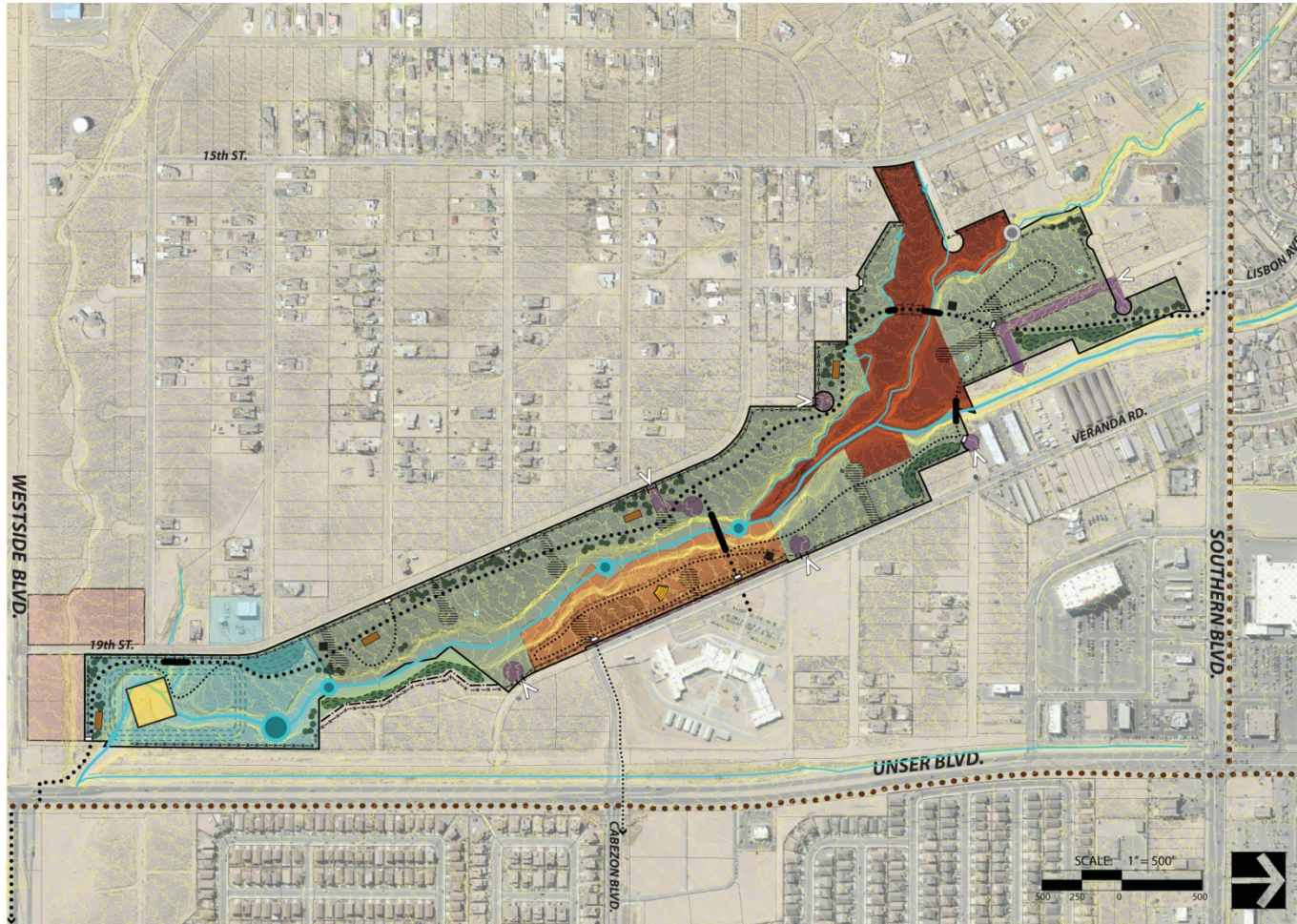


Grow-out nursery

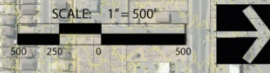


# Black Arroyo Wildlife Park

## Draft Master Plan



- LEGEND**
- ENVIRONMENTAL MITIGATION ZONE
  - OPEN SPACE  
*PROTECT & PRESERVE*
  - EDUCATION-ORIENTED OPEN SPACE  
*NATURAL PLAY, AMPHITHEATRE, ETC.*
  - FUTURE DAM POOL
  - FUTURE COMMERCIAL DEVELOPMENT
  - NEW EASEMENT BOUNDARY
  - RECLAMATION / REVEGETATION OF VACATED R.O.W.
  - IMPROVED DRIVE & PARKING FACILITIES FOR SITE ACCESS
  - NATURAL PLAY AREA
  - OUTDOOR CLASSROOM AREA
  - AMPHITHEATRE  
*ORIENT TO FACE ARROYO*
  - EXISTING TRAIL ALIGNMENT
  - COMMUTER TRAIL ALIGNMENT
  - NATURAL TRAIL ALIGNMENT
  - EXISTING FENCE
  - NEW ACCESS CONTROL BARRIER  
*FENCING, BOULDERS, ETC.*
  - ACCESS CONTROL GATE
  - PEDESTRIAN ACCESS CONTROL
  - ACCESS CONTROL STRUCTURE AT ARROYO
  - VEHICULAR ACCESS POINT
  - EXISTING DRAINAGEWAY
  - DROP STRUCTURE / WATER HARVESTING FEATURE
  - SEDIMENT FOREBAY
  - SHADE STRUCTURE WITH BENCHES AND / OR TABLES
  - WILDLIFE DRINKER
  - CHANNEL BRIDGE CROSSING
  - WELLNESS STATION
  - CITY-MANAGED TREE GROW-OUT NURSERY
  - EARTHEN BUFFER  
*LANDSCAPED BERMS*
  - VEGETATIVE BUFFER  
*NATIVE TREES & SHRUBS*



**BLACK ARROYO - SITE MASTER PLAN**



# Black Arroyo Wildlife Park Master Plan

- Concepts for educational amenities



Amphitheatre



Play area



Shade structure



Informational signage



Outdoor classroom

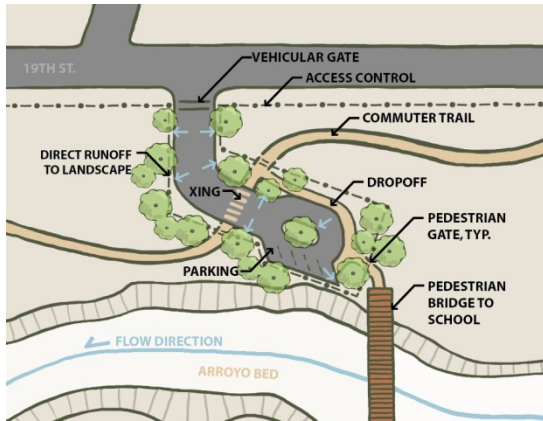


Informational signage



# Black Arroyo Wildlife Park

## Education Oriented Open Space and Drop Off



### EXPERIENTIAL HABITAT

- RECLAMATION & REVEGETATION ACTIVITIES
- GEOCACHING
- ECOLOGICAL, BOTANICAL & BIOLOGICAL STUDY
- ENVIRONMENTAL MONITORING PROGRAM (SIMILAR TO BEMPS IN BOSQUE)
- NATURAL FRUITING TREES AND SHRUBS

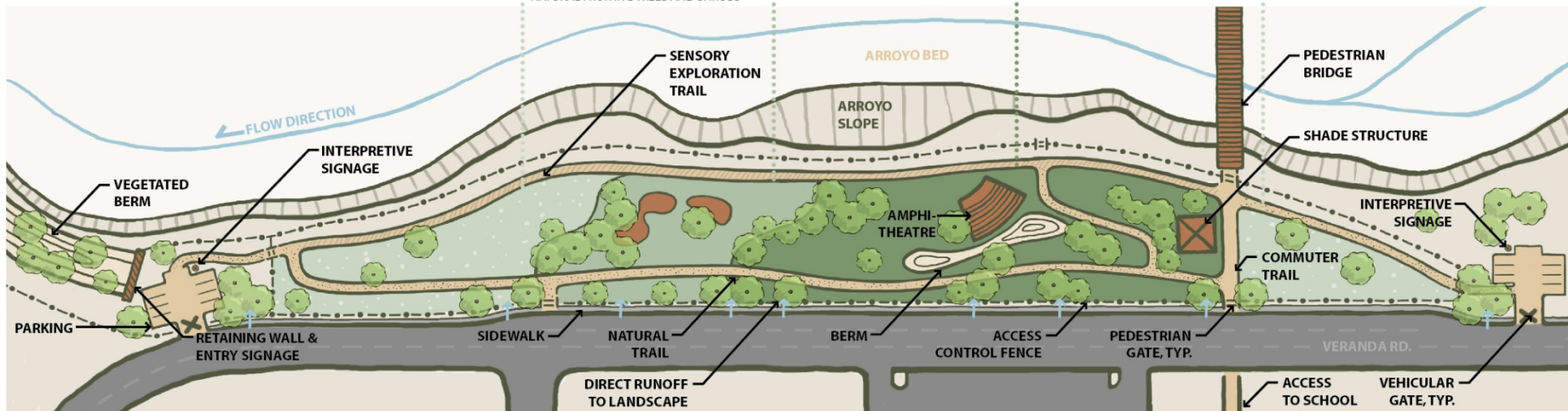
### NATURAL PLAY AREA

- ACTIVE PLAY (CLIMBING, BUILDING, EXPLORATION, ETC.)
- NATURAL PLAY STRUCTURES
- ARCHAEOLOGICAL "DIGS"

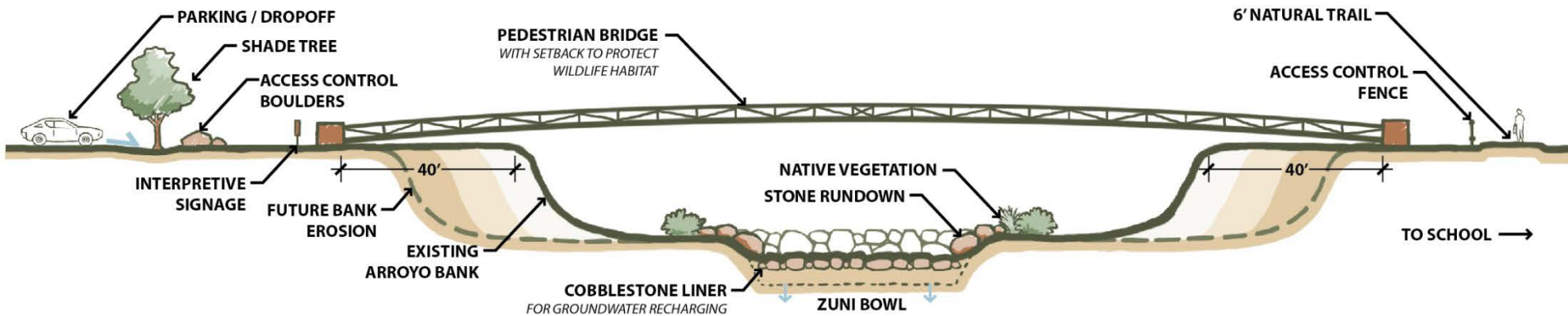
### OUTDOOR CLASSROOM

- LECTURES, PERFORMANCES & OTHER EVENTS
- COMPOSTING AND GARDEN PLOTS
- BIRD HOUSES / BAT BOXES
- EROSION CONTROL DEMONSTRATION
- BUTTERFLY GARDEN
- STAR PARTIES

### EXPERIENTIAL HABITAT



# Black Arroyo Wildlife Park Parking/Drop Off, Bridge and Trail



PEDESTRIAN BRIDGE @ SCHOOL SECTION

NOT TO SCALE



# **Black Arroyo Wildlife Park Schedule**

- Timeline to date:
  - Public scoping meeting held November 1, 2012
  - Agency coordination meeting held January 28, 2013
  - Public meeting to review draft Master Plan held March 13, 2013
- Remaining Project schedule:
  - Presentation to Maggie Cordova PTO on May 13
  - Present final plan to SSCAFCA Board of Directors at May 17 meeting

**Thank You !**