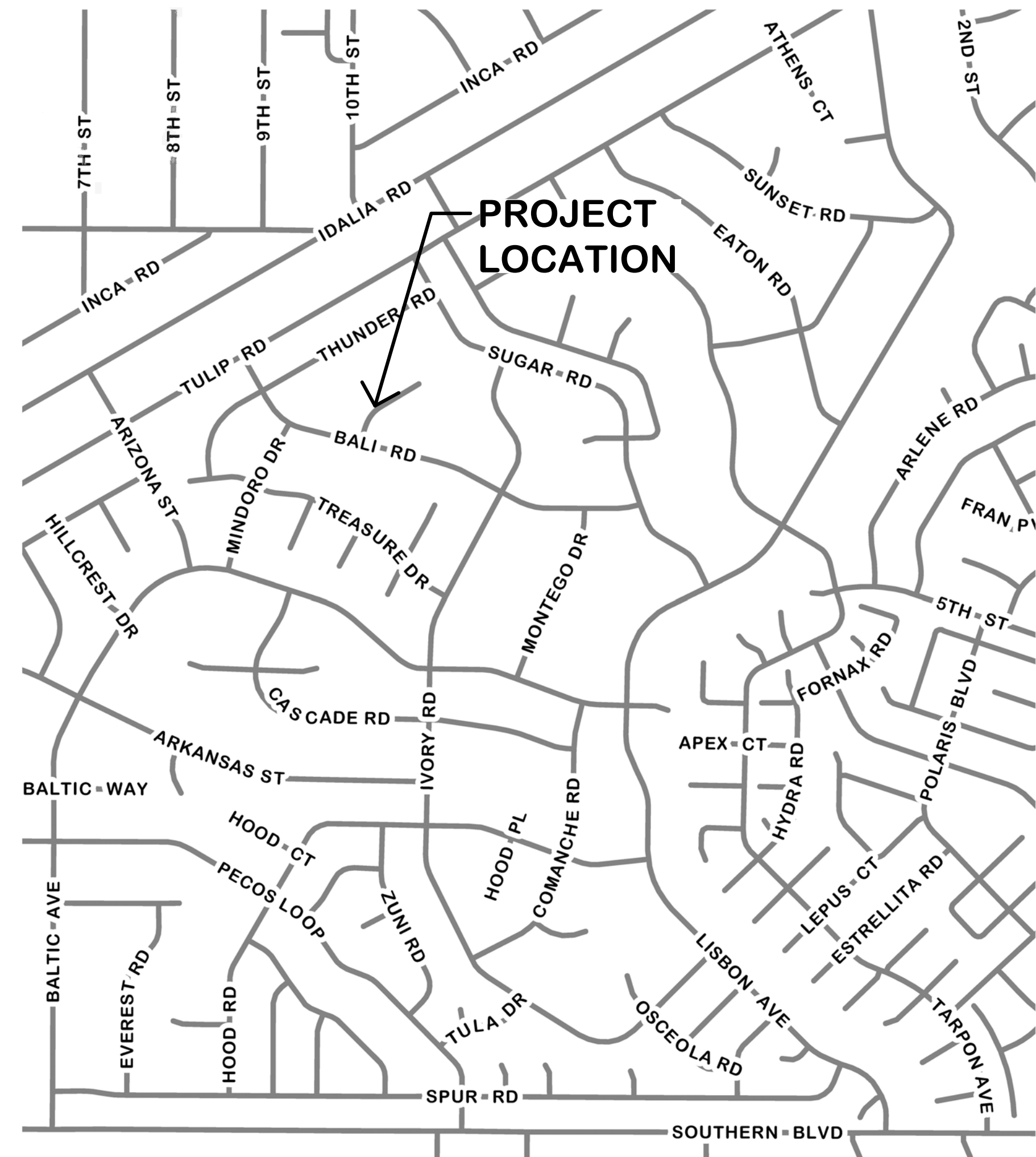


# SOUTHERN SANDOVAL COUNTY ARROYO FLOOD CONTROL AUTHORITY MONTEGO COURT DRAINAGE IMPROVEMENTS BLACK ARROYO WATERSHED



**VICINITY MAP**

SHEET INDEX	
Sheet Number	Sheet Title
1	COVER SHEET
2	GENERAL NOTES
3	TOPOGRAPHIC SURVEY
4	CHANNEL 'A' – PLAN & PROFILE
5	CHANNEL 'B' – PLAN & PROFILE
6	DETAILS
7	CROSS SECTIONS – CHANNEL 'A'
8	CROSS SECTIONS – CHANNEL 'B'

### APPROVALS

SSCAFCA: \_\_\_\_\_ DATE: \_\_\_\_\_  
EXECUTIVE ENGINEER

CITY OF RIO RANCHO: \_\_\_\_\_ DATE: \_\_\_\_\_  
DEVELOPMENT SERVICES DEPARTMENT



**Southern Sandoval  
County  
Arroyo Flood Control  
Authority**

1041 Commercial Dr. S.E.  
Rio Rancho, New Mexico 87124  
505-892-RAIN (7246)  
505-892-7241 (Fax)  
[www.sscafca.com](http://www.sscafca.com)



MONTEGO COURT DRAINAGE  
IMPROVEMENTS

COVER SHEET  
VICINITY MAP & SHEET INDEX

REVISIONS & CHANGE NOTICES		
MARK	DESCRIPTION	DATE

PROJECT NO: BL\_P0026  
DESIGNED BY: JB  
DRAWN BY: KLF  
CHECKED BY: AES  
DATE: 8/13/2018

GENERAL NOTES

- 1. ALL CONSTRUCTION SHALL BE PERFORMED IN ACCORDANCE WITH 1) THE PROJECT CONSTRUCTION PLANS, 2) THE PROJECT SPECIFICATIONS, AND 3) NEW MEXICO STANDARD SPECIFICATIONS FOR PUBLIC WORKS CONSTRUCTION...

GENERAL NOTES (CONTINUED)

- 21. CONTRACTOR SHALL PROVIDE CONSTRUCTION STAKING UTILIZING APPROVED CONSTRUCTION PLANS, THE APPROPRIATE RIGHT-OF-WAY MAPS, RECORDED PLATS, AND CITY OF RIO RANCHO STANDARD DETAILS...

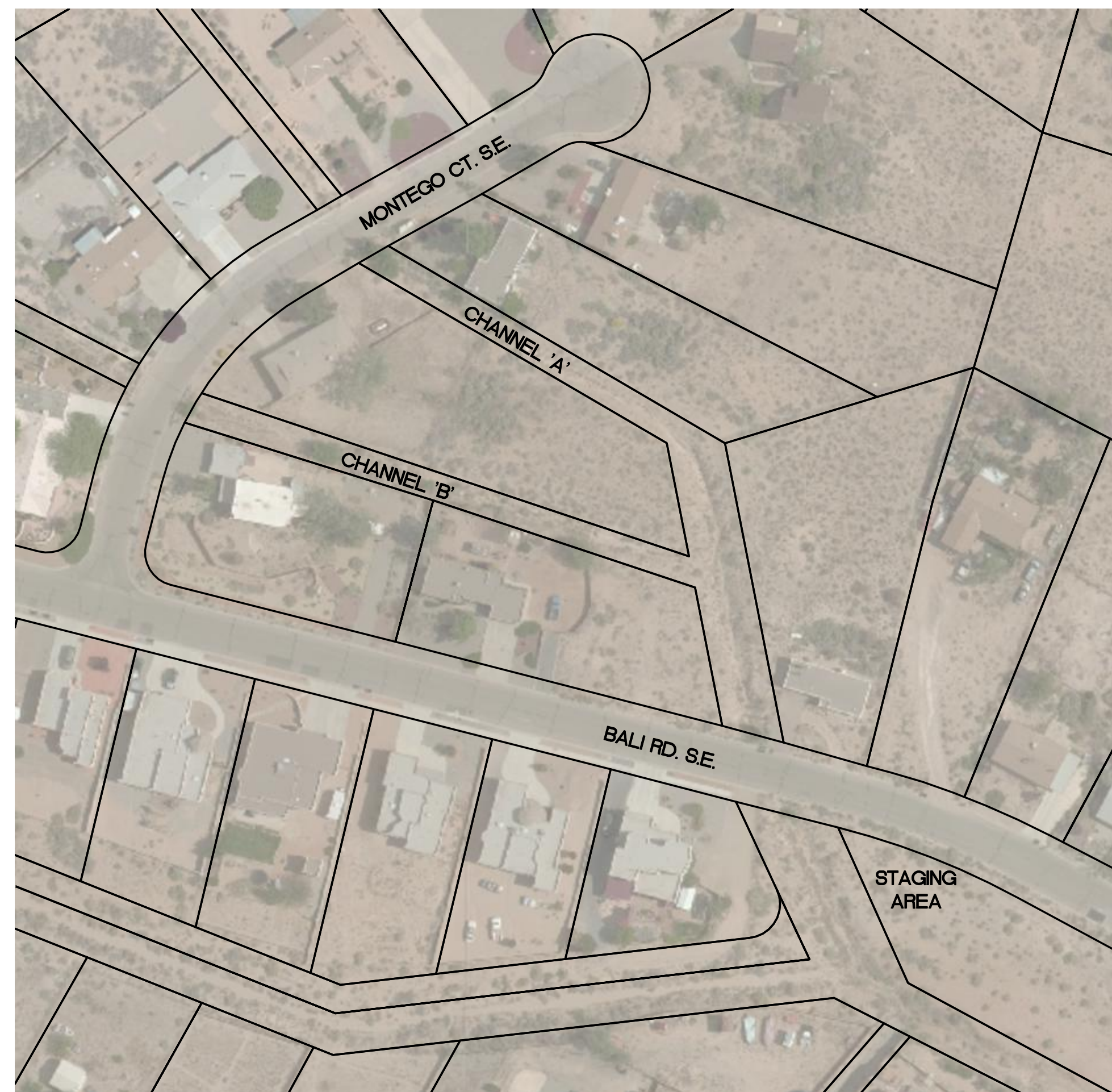
SOILS

- 1. UNLESS OTHERWISE SPECIFIED SUBGRADE SOILS AND STRUCTURAL FILL MATERIALS SHALL BE COMPACTED TO THE FOLLOWING PERCENTAGES OF THE ASTM D-1557 MAXIMUM DENSITY.

Table with 2 columns: MATERIALS and PERCENT (%) COMPACTION. Lists items like STRUCTURAL FILL IN THE BUILDING AREA and MISCELLANEOUS BACKFILL BELOW STRUCTURAL.

LEGEND

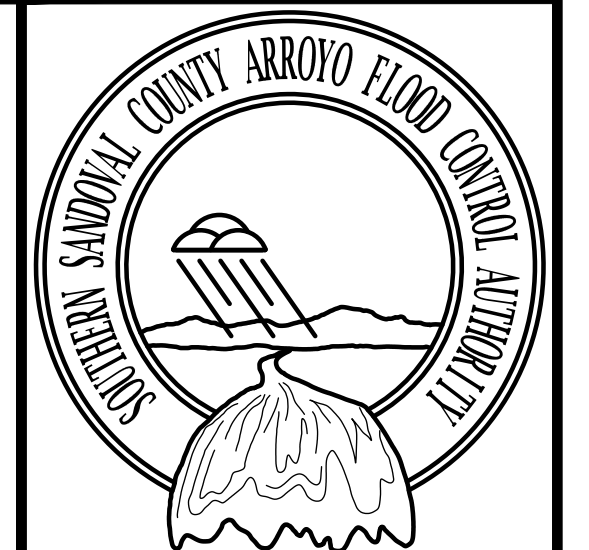
- WIRES ENCLOSED RIPRAP
MAINTENANCE ACCESS AND TRAIL
CONCRETE



CHANNEL DESIGNATIONS & STREET NAMES

ABBREVIATIONS

Table listing various abbreviations (AP, @, BC, BCR, BK, BLDG, etc.) and their corresponding full names (ANALYSIS POINT, BEGIN CURVE, etc.).



Southern Sandoval County Arroyo Flood Control Authority
1041 Commercial Dr. S.E.
Rio Rancho, New Mexico 87124



MONTEGO COURT DRAINAGE IMPROVEMENTS
GENERAL NOTES

Table for REVISIONS & CHANGE NOTICES with columns for MARK, DESCRIPTION, and DATE.

PROJECT NO: BL\_P0026
DESIGNED BY: JB
DRAWN BY: KLF
CHECKED BY: AES
DATE: 8/16/2018

2
SHEET 2 OF 8

Thursday, August 16, 2018 4:36:26 PM - Kathy Feunster
D:\sscafca\_projects\Files\Blast\BL\_P0026\AutoCAD\Production\Drawings\Mon\_seta\_BL\_P0026\_C-0002.dwg

**Topographic Map**  
for  
**Portions of Parcels B, C and D**  
**Siesta Hills II**  
City of Rio Rancho  
Sandoval County, New Mexico  
June 2018



Vicinity Map

N.T.S.

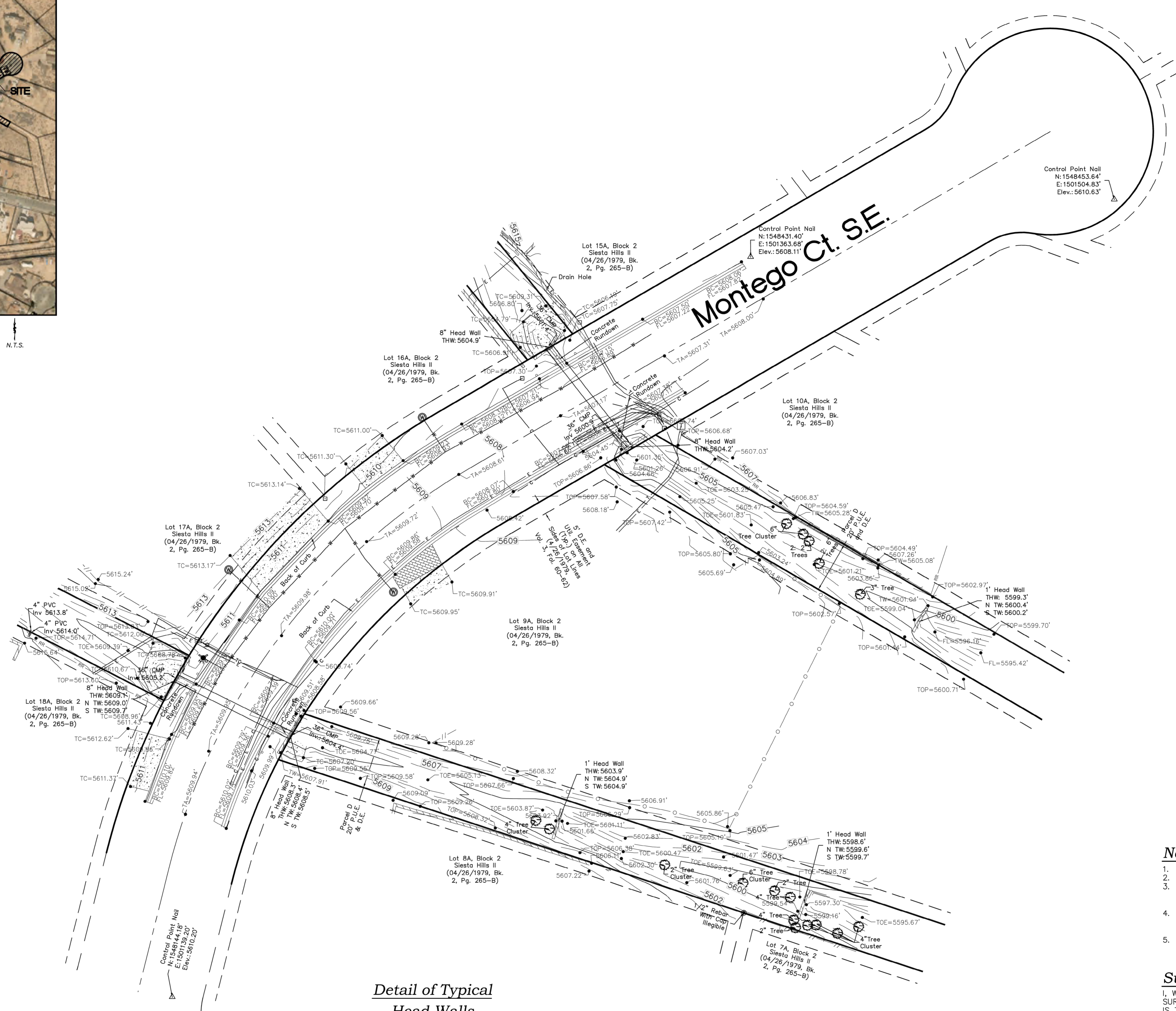
**Benchmark -NAVD 88**

THE BENCHMARK ELEVATIONS SHOWN HEREON WERE OBTAINED BY GPS OBSERVATION DERIVED FROM AN OPUS SOLUTION USING THE FOLLOWING THREE STATIONS:

NMSF SANTA FE CORS ARP  
P107 GRANTS\_NM2006 CORS ARP  
P034 SANDIA\_ASLNM2004 CORS ARP

BASED UPON THE ACCURACIES AS DETERMINED USING THE NGS OPUS SOLUTIONS AND THE METHODS USED IN THE FIELD, THE PUBLISHED COORDINATES AND ELEVATIONS SHOWN HEREON HAVE THE FOLLOWING ACCURACIES:

X= 0.10'  
Y= 0.10'  
Z= 0.10'



**Legend**

	FOUND MONUMENT AS INDICATED
	SET BATHEY MARKER "LS 14271" UNLESS OTHERWISE NOTED
	CONCRETE
	BRICK
	UTILITY PEDESTAL
	GUARD RAIL
	WOOD FENCE
	METAL FENCE
	BLOCK WALL
	CHAINLINK FENCE
	RAILROAD TIES
	WATER METER
	FIRE HYDRANT
	TREE
	UNDERGROUND GAS UTILITY LINE
	UNDERGROUND WATER UTILITY LINE
	UNDERGROUND CABLE UTILITY LINE
	UNDERGROUND ELECTRIC UTILITY LINE
	UNDERGROUND TELEPHONE UTILITY LINE
	SPOT ELEVATION
	BC 5075.50
	FL 5075.50
	TC 5075.50
	TOP 5075.50
	TOE 5075.50
	TW 5075.50
	THW 5075.50

**Notes**

1. FIELD SURVEY PERFORMED IN MAY 2018.
2. ALL DISTANCES ARE GROUND DISTANCES: U.S. SURVEY FOOT.
3. THE EASEMENTS SHOWN HEREON ARE ONLY THE EASEMENTS AS SHOWN ON THE PLAT OF RECORD. A TITLE COMMITMENT WILL BE REQUIRED TO SHOW OTHER EASEMENTS.
4. THERE IS A 5' DRAINAGE AND UTILITY EASEMENT ALONG ALL SIDES OF EACH LOT PER PLAT OF RECORD FILED IN THE SANDOVAL COUNTY CLERK'S OFFICE ON APRIL 26, 1979, IN VOL. 3, FOL. 60-62.
5. THE COORDINATES SHOWN HEREON AS NEW MEXICO STATE PLANE COORDINATES (NAD 83-GRID).

**Surveyor's Certificate**

I, WILL PLOTNER JR., A NEW MEXICO REGISTERED PROFESSIONAL LAND SURVEYOR DO HEREBY CERTIFY THAT THE TOPOGRAPHIC MAP SHOWN HEREON IS TRUE AND CORRECT TO THE BEST OF MY KNOWLEDGE AND BELIEF.

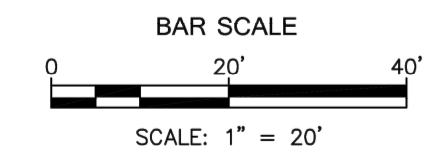
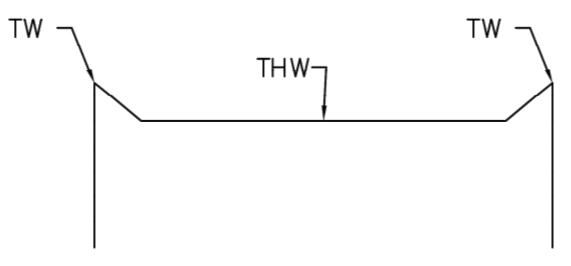
*Will Plotner Jr.* 6/11/18  
Will Plotner Jr. Date  
N.M.R.P.S. No. 14271



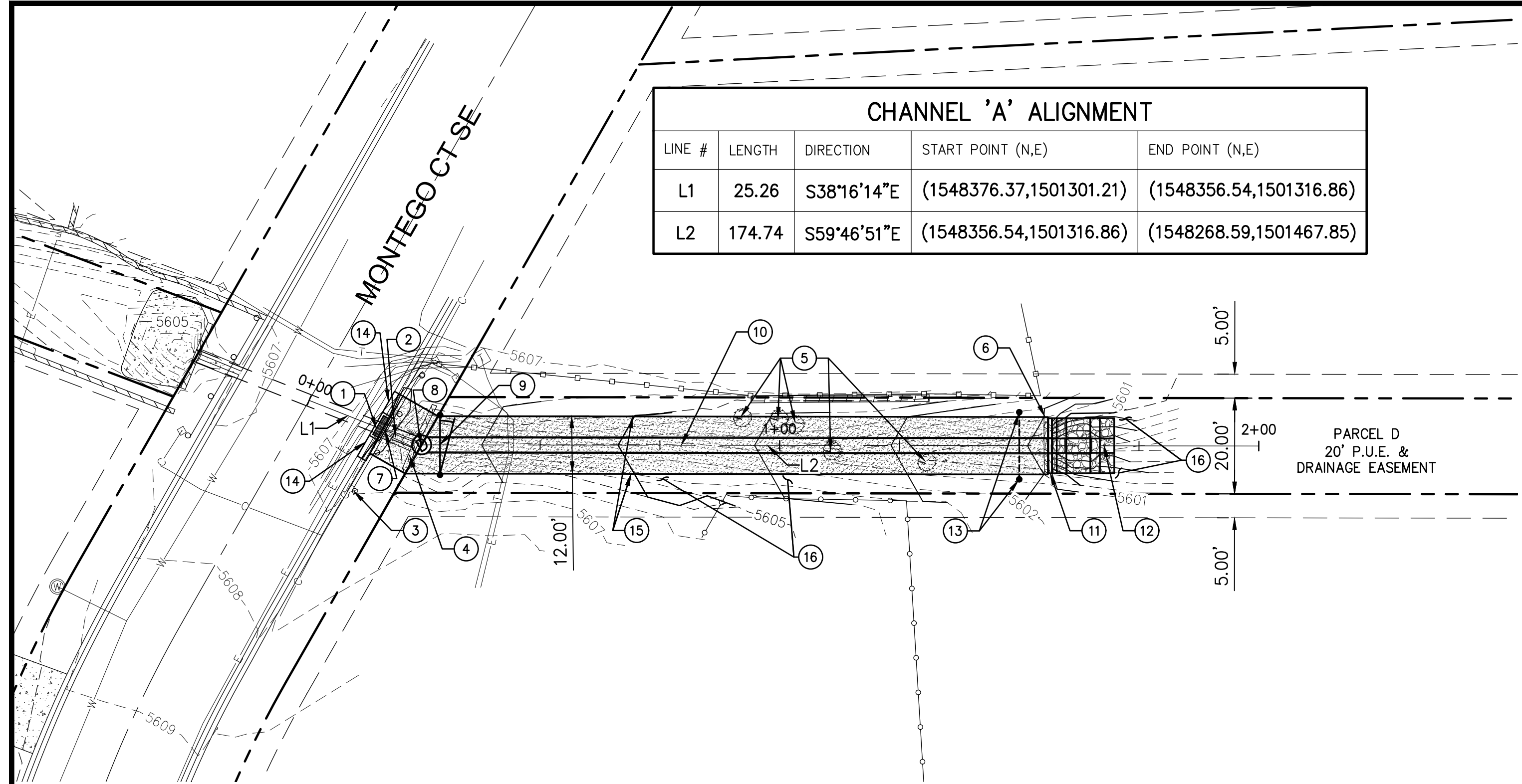
**CSI-CARTESIAN SURVEYS INC.**

P.O. BOX 44414 RIO RANCHO, N.M. 87174  
Phone (505) 896-3050 Fax (505) 891-0244

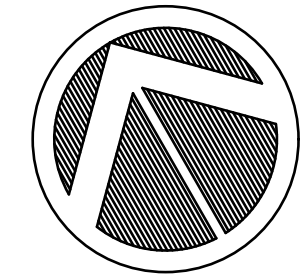
**Detail of Typical Head Walls**



THIS IS NOT A BOUNDARY SURVEY, APPARENT PROPERTY CORNERS ARE SHOWN FOR ORIENTATION ONLY. BOUNDARY DATA SHOWN IS FROM PREVIOUS SURVEY REFERENCED HEREON.

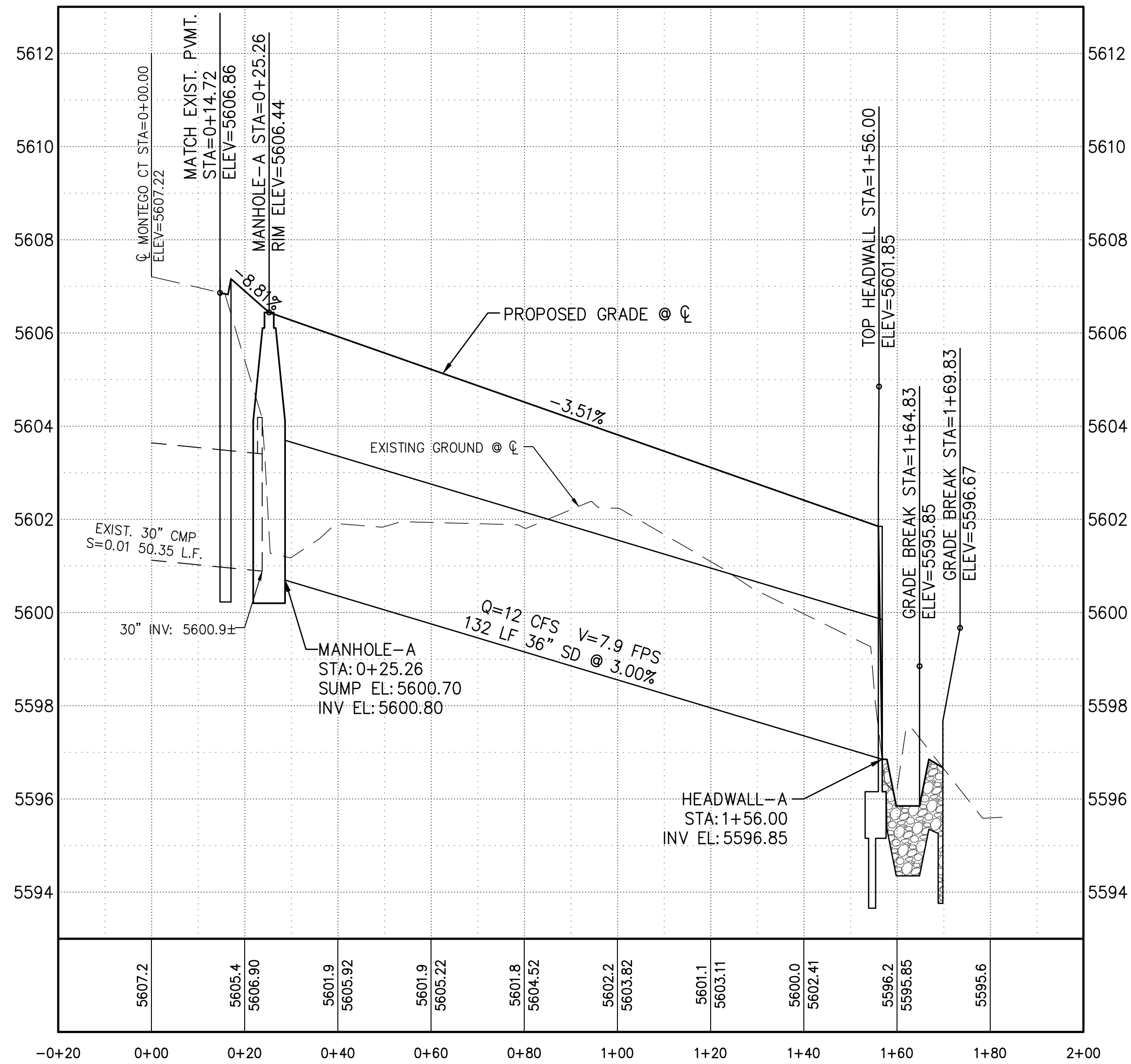


CHANNEL 'A' ALIGNMENT				
LINE #	LENGTH	DIRECTION	START POINT (N,E)	END POINT (N,E)
L1	25.26	S38°16'14"E	(1548376.37,1501301.21)	(1548356.54,1501316.86)
L2	174.74	S59°46'51"E	(1548356.54,1501316.86)	(1548268.59,1501467.85)



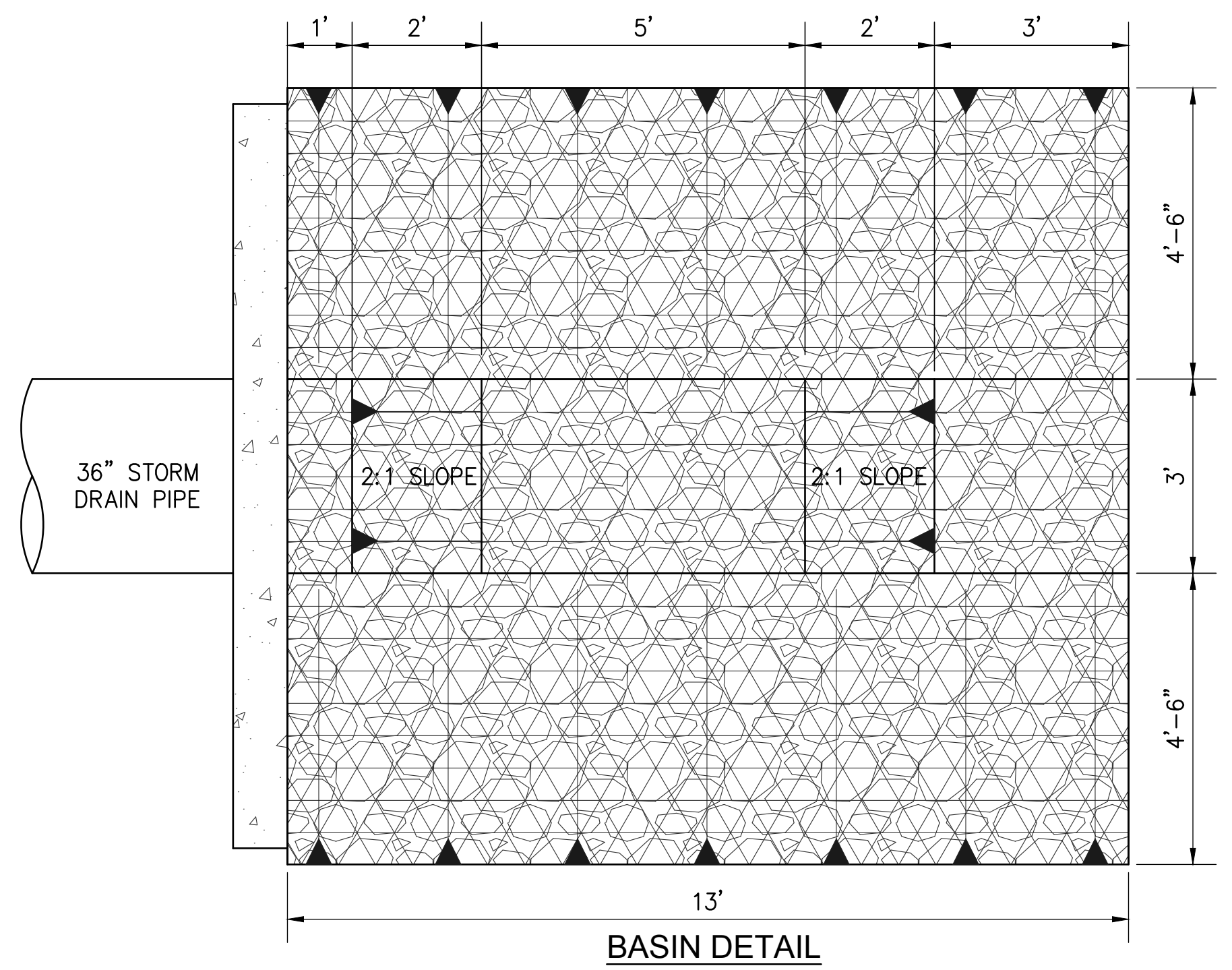
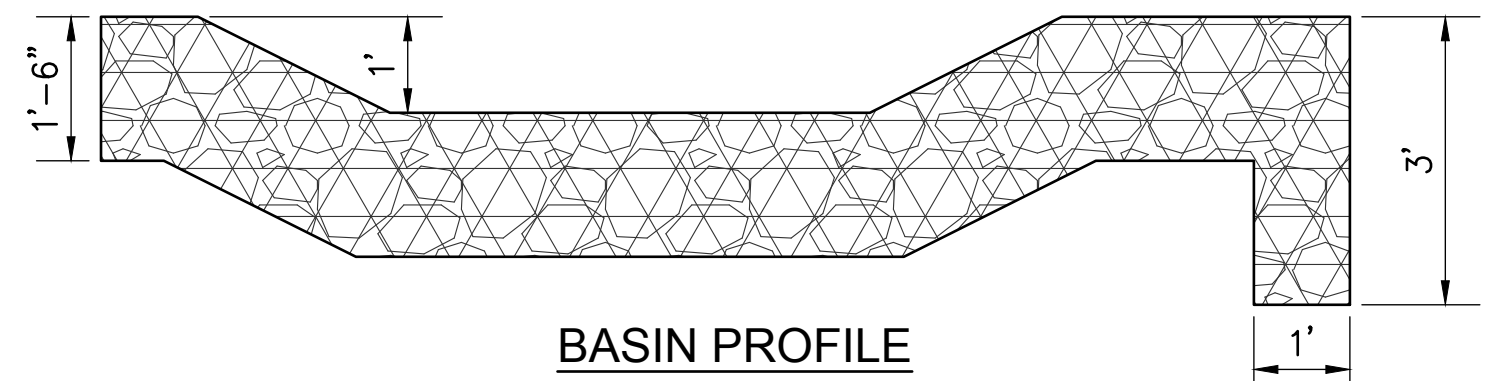
LEGEND	
	WIRE ENCLOSED RIPRAP
	MAINTENANCE ACCESS AND TRAIL
	CONCRETE

CHANNEL 'A' PROFILE



KEYED NOTES:

- SAWCUT, REMOVE & DISPOSE 15.58 LF EXISTING CONCRETE ROLL CURB AND GUTTER.
- REMOVE & DISPOSE EXISTING 5'X7'± CONCRETE RUNDOWN AND VERTICAL CURBS.
- REMOVE & DISPOSE 28.33 LF EXISTING GUARDRAIL.
- STA. 0+23.23, REMOVE & DISPOSE 14.89 LF CONCRETE HEADWALL.
- REMOVE & DISPOSE EXISTING TREES AND VEGETATION AS NEEDED FOR CONSTRUCTION.
- STA. 1+54.93, REMOVE & DISPOSE 11.50 LF CONCRETE HEADWALL.
- STA. 0+17.08, INSTALL TYPE 1, (SINGLE BAY) DROP INLET FOR TYPE 'A' CURBS W/ (2) 5' CURB TRANSITIONS, PER NMDOT STD. DWG. 623-13-1, 2 & 3/3, CENTER OVER EXISTING STORM DRAIN.
- STA. 0+25.26, INSTALL 6' DIA. PRECAST CONCRETE MANHOLE TYPE 'C' PER NMDOT STD. DWG. 662-01-1/3.
- STA. 0+28.85, INSTALL 14' PIPE GATE CENTERED ON MAINTENANCE ACCESS PER DETAIL SHEET 6.
- STA. 0+25.26 TO 1+56.83, INSTALL 132 LF 36" STORM DRAIN.
- STA. 1+56.83, INSTALL PIPE CULVERT HEADWALL PER NMDOT STD. DWG. 511-03-1 & 2/2. SHAPE TOP OF HEADWALL TO MATCH MAINTENANCE ACCESS INVERTED CROWN.
- STA. 1+56.83 TO 1+69.83, INSTALL CLASS "A" WIRE ENCLOSED RIPRAP PER NMDOT STD. DWG. 602-01-1/1 FOR DESCRIPTIONS OF WIRE MESH AND ALTERNATE PATTERNS. SEE ALSO NMDOT STD. DWG. 602-02-1/1 FOR H-1 HEADWALL INSTALLATION, HOOK BOLTS CONSIDERED INCIDENTAL TO HEADWALL CONSTRUCTION. SEE BASIN DETAIL BELOW.
- STA. 1+50, 7' LT. & RT. OF C, INSTALL BOLLARDS W/ 3/8" CABLE CONNECTED BETWEEN, PER BOLLARD DETAIL ON DETAIL SHEET 6.
- STA. 0+16.72, 2.79' LT. & RT. OF C, INSTALL 5 LF 2' CONCRETE MOUNTABLE CURB & GUTTER TYPE 'A' PER NMDOT STD. DWG. 609-01-1/1. WARP C TO MEET DROP INLET.
- STA. 0+17.08 TO 1+50, 12' WIDE MAINTENANCE ACCESS & TRAIL PER TYPICAL SECTION ON DETAIL SHEET 6.
- 3" GRAVEL MULCH & SEEDING OVER ALL FINISHED SLOPES WITHIN SSCAFCA R/W PER APWA SPEC. 1012.



**Southern Sandoval County**  
**Arroyo Flood Control Authority**  
 1041 Commercial Dr. S.E.  
 Rio Rancho, New Mexico 87124  
 505-892-RAIN (7246)  
 505-892-7241 (Fax)  
[www.sscafca.com](http://www.sscafca.com)

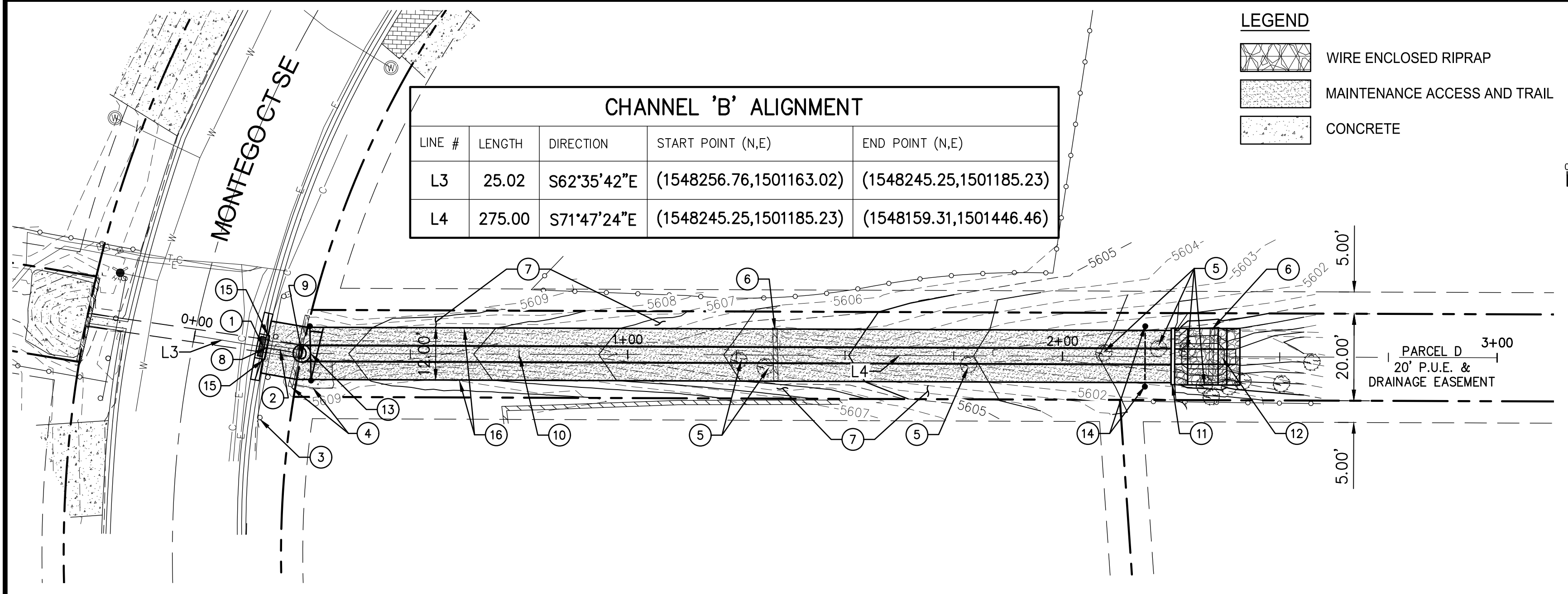
MONTEGO COURT DRAINAGE IMPROVEMENTS

CHANNEL 'A' - PLAN & PROFILE

REVISIONS & CHANGE NOTICES		
MARK	DESCRIPTION	DATE

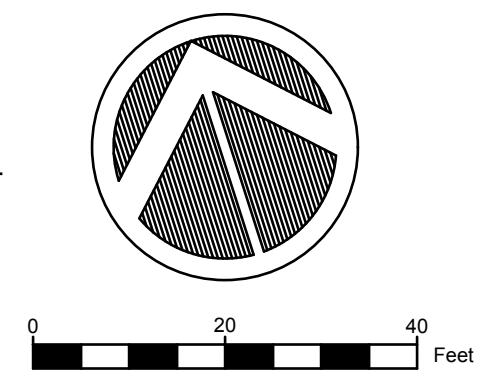
PROJECT NO: BL\_P0026  
 DESIGNED BY: JB  
 DRAWN BY: KLF  
 CHECKED BY: AES  
 DATE: 8/16/2018

Thursday, August 16, 2018 4:27:47 PM - Kathy Frazier  
 C:\sandoval\project\_files\blast\BL\_P0026\AutoCAD\Source\Drawings\BL\_P0026\_C-BLAST.dwg

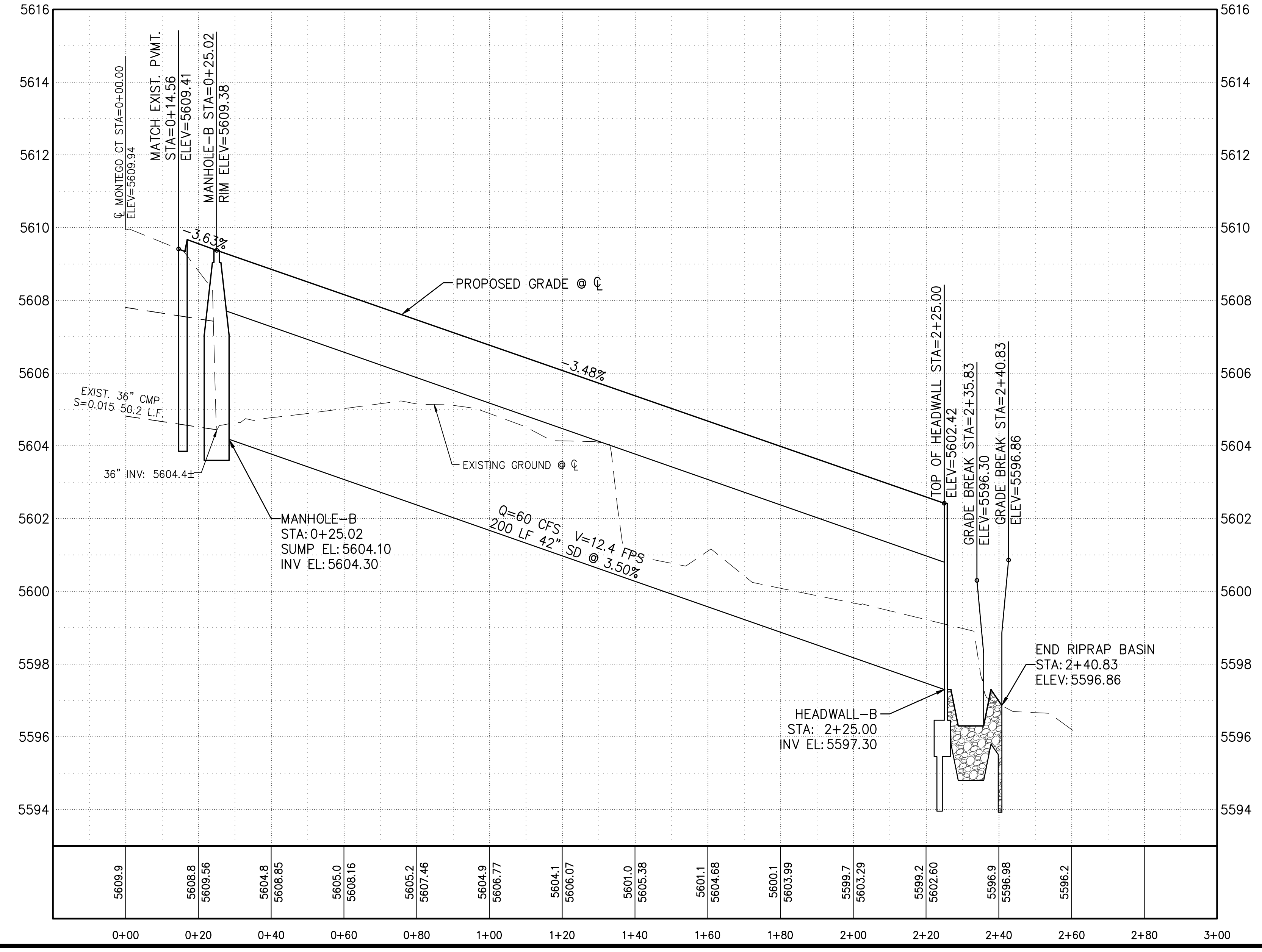


CHANNEL 'B' ALIGNMENT				
LINE #	LENGTH	DIRECTION	START POINT (N,E)	END POINT (N,E)
L3	25.02	S62°35'42"E	(1548256.76,1501163.02)	(1548245.25,1501185.23)
L4	275.00	S71°47'24"E	(1548245.25,1501185.23)	(1548159.31,1501446.46)

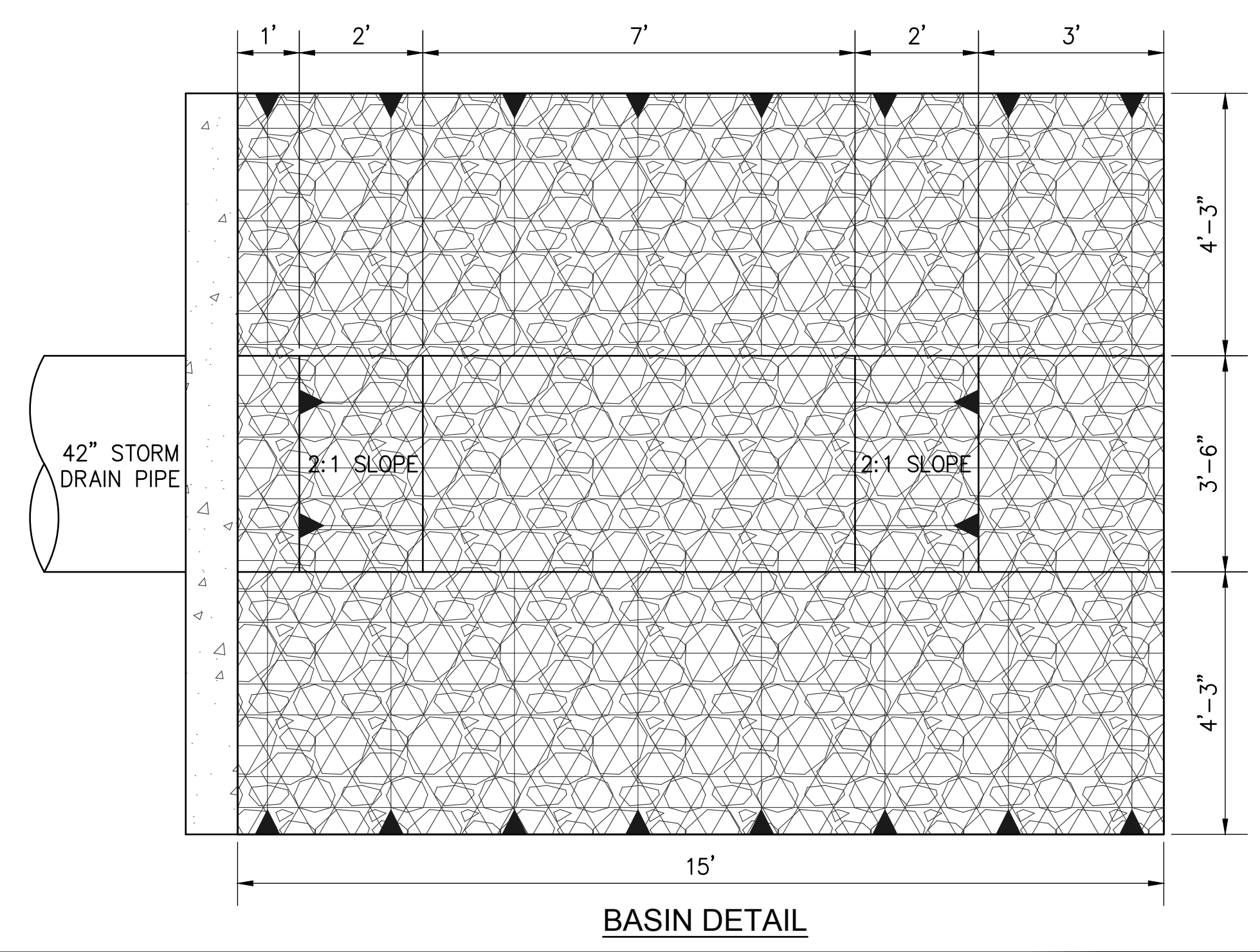
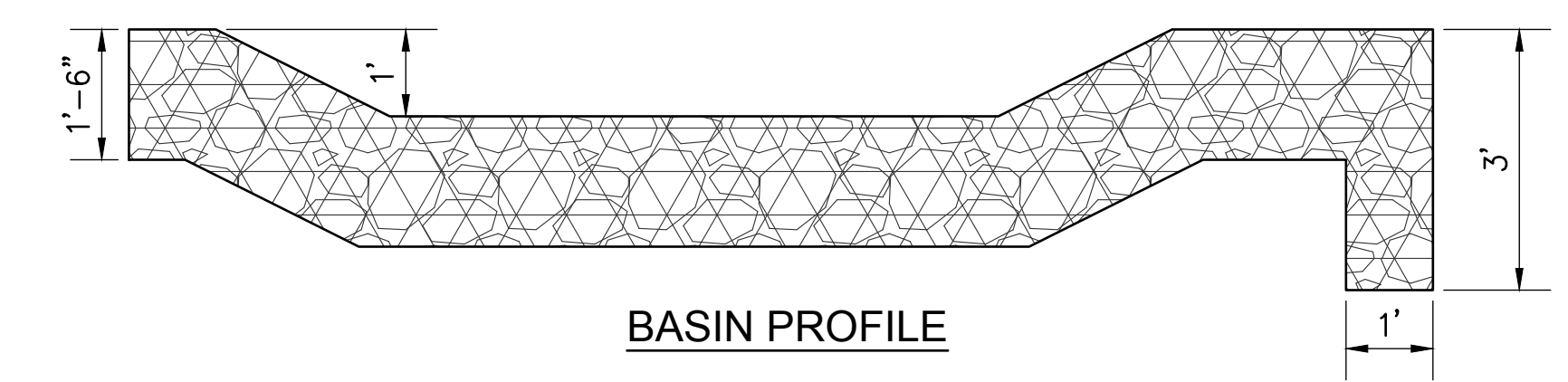
- LEGEND**
- WIRE ENCLOSED RIPRAP
  - MAINTENANCE ACCESS AND TRAIL
  - CONCRETE



### CHANNEL 'B' PROFILE



- KEYED NOTES:**
- SAWCUT, REMOVE & DISPOSE 15.58 LF EXISTING CONCRETE ROLL CURB AND GUTTER.
  - REMOVE & DISPOSE EXISTING 5'X7'± CONCRETE RUNDOWN AND VERTICAL CURBS.
  - REMOVE & DISPOSE 28.73 LF EXISTING GUARDRAIL.
  - REMOVE & DISPOSE 16.79 LF CONCRETE HEADWALL & CONCRETE APRON.
  - REMOVE & DISPOSE EXISTING TREES AND VEGETATION AS NEEDED FOR CONSTRUCTION.
  - STA. 1+33.50 & 2+33.75, REMOVE & DISPOSE 12 LF CONCRETE HEADWALL.
  - 3" THICK GRAVEL MULCH & SEEDING OVER ALL FINISHED SLOPES WITHIN SSSCAFA R/W PER APWA SPEC. 1012.
  - STA. 0+17.08, INSTALL TYPE 1, (SINGLE BAY) DROP INLET FOR TYPE 'A' CURBS W/ (2) 5' CURB TRANSITIONS, PER NMDOT STD. DWG. 623-13-1, 2 & 3/3, CENTER OVER EXISTING STORM DRAIN.
  - STA. 0+25.02, INSTALL 6' DIA. PRECAST CONCRETE MANHOLE TYPE 'C' PER NMDOT STD. DWG. 662-01-1/3.
  - STA. 0+25 TO 2+25, INSTALL 200 LF 42" STORM DRAIN.
  - STA. 2+25, INSTALL PIPE CULVERT HEADWALL PER NMDOT STD. DWG. 511-03-1 & 2/2. SHAPE TOP OF HEADWALL TO MATCH MAINTENANCE ACCESS INVERTED CROWN.
  - STA. 2+25.83 TO 2+40.83, INSTALL CLASS "A" WIRE ENCLOSED RIPRAP PER NMDOT STD. DWG. 602-01-1/1 FOR DESCRIPTIONS OF WIRE MESH AND ALTERNATE PATTERNS. SEE ALSO NMDOT STD. DWG. 602-02-1/1 FOR H-1 HEADWALL INSTALLATION, HOOK BOLTS CONSIDERED INCIDENTAL TO HEADWALL CONSTRUCTION. SEE BASIN DETAIL BELOW.
  - STA. 0+27, INSTALL 14' PIPE GATE CENTERED ON MAINTENANCE ACCESS PER DETAIL SHEET 6.
  - STA. 2+19, 7' LT. & RT. OF C, INSTALL BOLLARDS W/ 3/8" CABLE CONNECTED BETWEEN, PER BOLLARD DETAIL ON DETAIL SHEET 6.
  - STA. 0+16.72, 2.79' LT. & RT. OF C, INSTALL 5 LF 2' CONCRETE MOUNTABLE CURB & GUTTER TYPE 'A' PER NMDOT STD. DWG. 609-01-1/1. WARP C TO MEET DROP INLET.
  - STA. 0+17.08 TO 2+19, 12' WIDE MAINTENANCE ACCESS & TRAIL PER TYPICAL SECTION ON DETAIL SHEET 6.
  - 3" GRAVEL MULCH & SEEDING OVER ALL FINISHED SLOPES WITHIN SSSCAFA R/W PER APWA SPEC. 1012.



**Southern Sandoval County  
Arroyo Flood Control  
Authority**  
1041 Commercial Dr. S.E.  
Rio Rancho, New Mexico 87124  
505-892-RAIN (7246)  
505-892-7241 (Fax)  
[www.sscasca.com](http://www.sscasca.com)

MONTEGO COURT DRAINAGE IMPROVEMENTS

CHANNEL 'B' - PLAN & PROFILE

REVISIONS & CHANGE NOTICES		
MARK	DESCRIPTION	DATE

PROJECT NO: BL\_P0026  
DESIGNED BY: JB  
DRAWN BY: KLF  
CHECKED BY: AES  
DATE: 8/16/2018

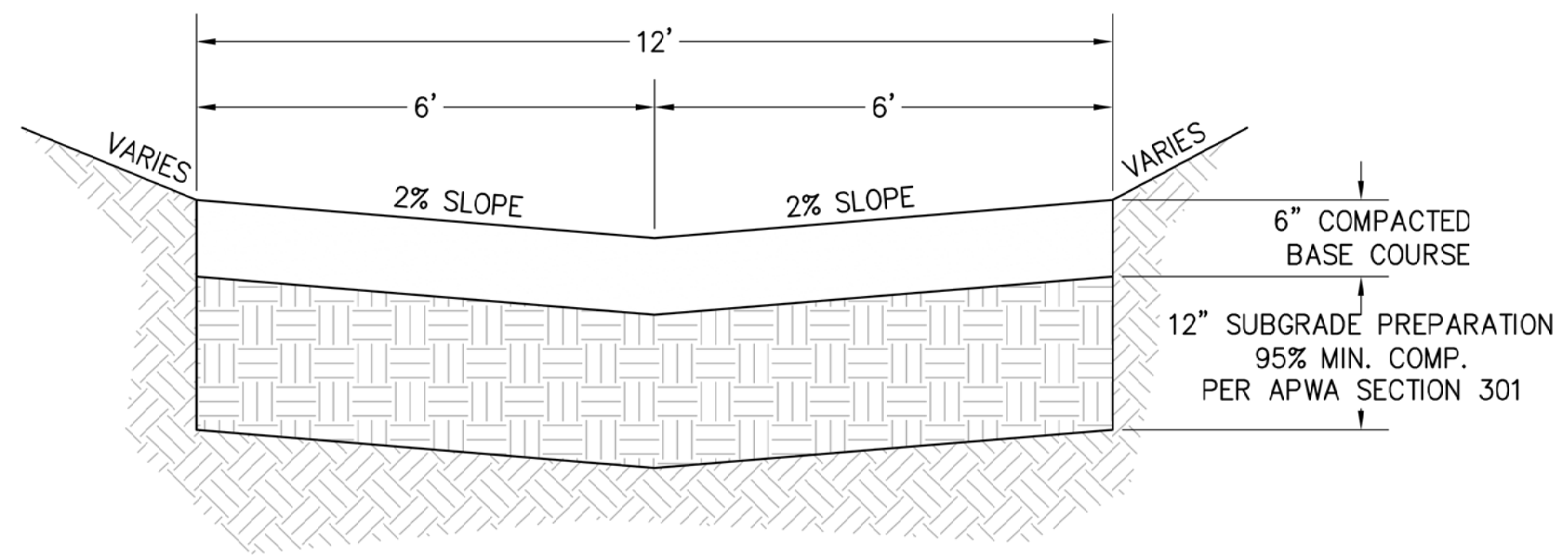
Thursday, August 16, 2018 4:26:47 PM - Kathy Frazier  
C:\sandoval\project\_files\blast\BL\_P0026\AutoCAD\Source\Drawings\BL\_P0026\_C-BLUSE.dwg

**GENERAL NOTES:**

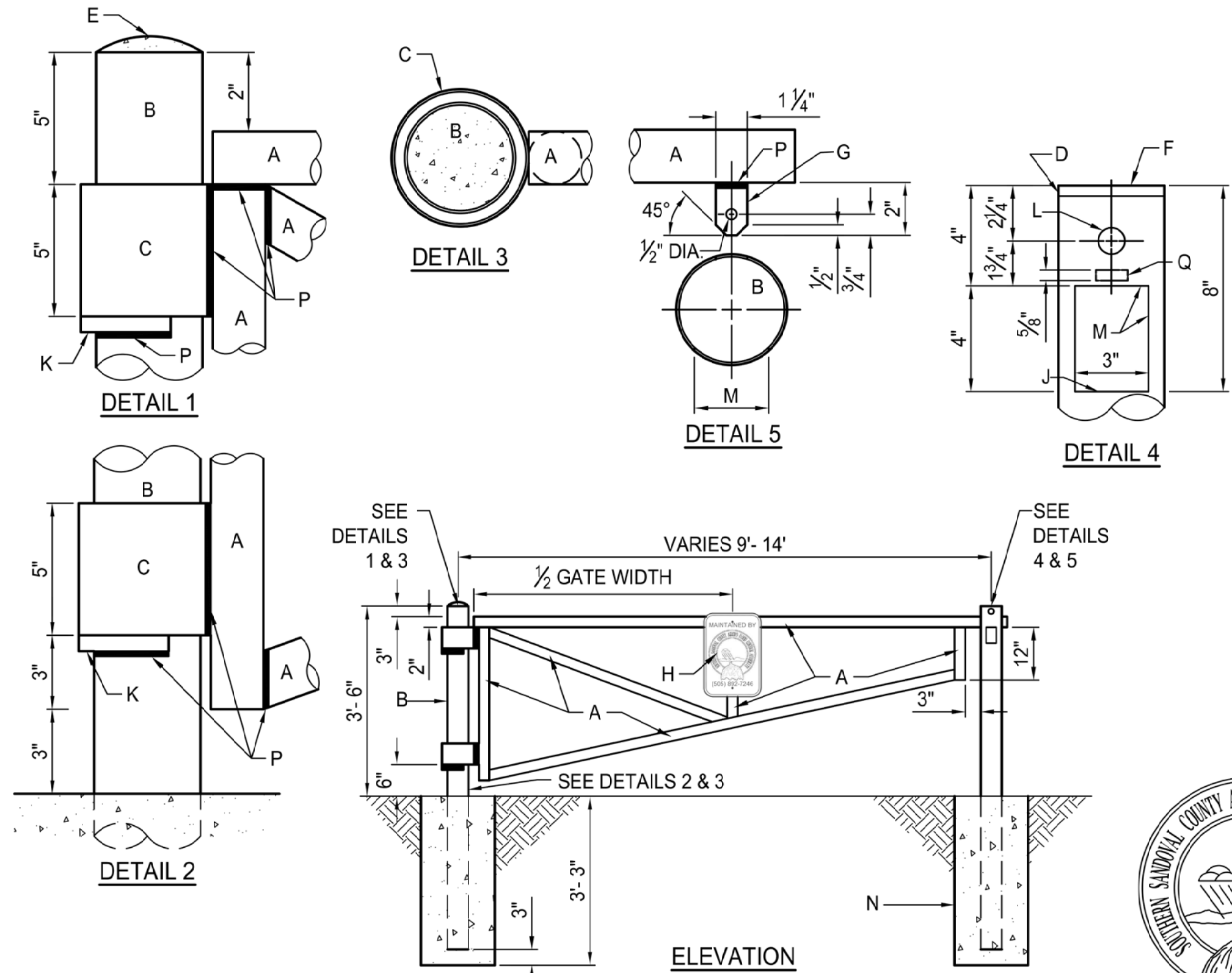
1. ALL WELDED AND CUT AREAS TO BE CLEANED THOROUGHLY WITH A WIRE BRUSH AND OR SAND BLAST AND REGALVANIZED.
2. REGALVANIZING SHALL BE WITH SHERWIN WILLIAMS ZINC CLAD 7 PRIMER OR EQUAL.
3. AFTER PRIMING, PAINT ALL PIPE, HINGES, LOCKING MECHANISM, ETC. WITH TWO (2) COATS OF OSHA SAFETY BLUE.

**CONSTRUCTION NOTES:**

- A. 2" NOMINAL DIA. GALV. PIPE, MIN. WEIGHT PER FOOT 3.65 LBS.
- B. 4" DIA. BLACK STEEL PIPE, MIN. 10.79 LBS./FT., CONC. FILLED.
- C. 5" DIA. BLACK STEEL PIPE, MIN. 14.62 LBS./FT.
- D. ¼" BUTT WELD ALL AROUND.
- E. CONCRETE ROUNDED AT TOP OF POST.
- F. ¾" X 4 ¼" DIA. STEEL PLATE.
- G. ¾" STEEL PLATE FLANGE.
- H. REFLECTIVE SIGN WILL BE PROVIDED AND INSTALLED BY SSCAFCA.
- J. STOP CONCRETE IN PIPE AT THIS POINT.
- K. ½" SQ. STEEL BAR FOR HINGE SUPPORT. POSITION BAR TO ALLOW UNRESTRICTED GATE ROTATION THROUGH ENTIRE SWING OF GATE OPENING.
- L. 1" DIA. FINGER HOLE.
- M. MAKE A 3" X 4" CUT IN PIPE.
- N. 3,000 PSI AIR ENTRAINED FLY ASH CONCRETE.
- P. WELD ALL 2" PIPE & FIXTURE CONNECTIONS WITH ⅜" FILLET ALL AROUND.
- Q. 1 ½" X ⅝" SLOT FOR STEEL PLATE FLANGE.



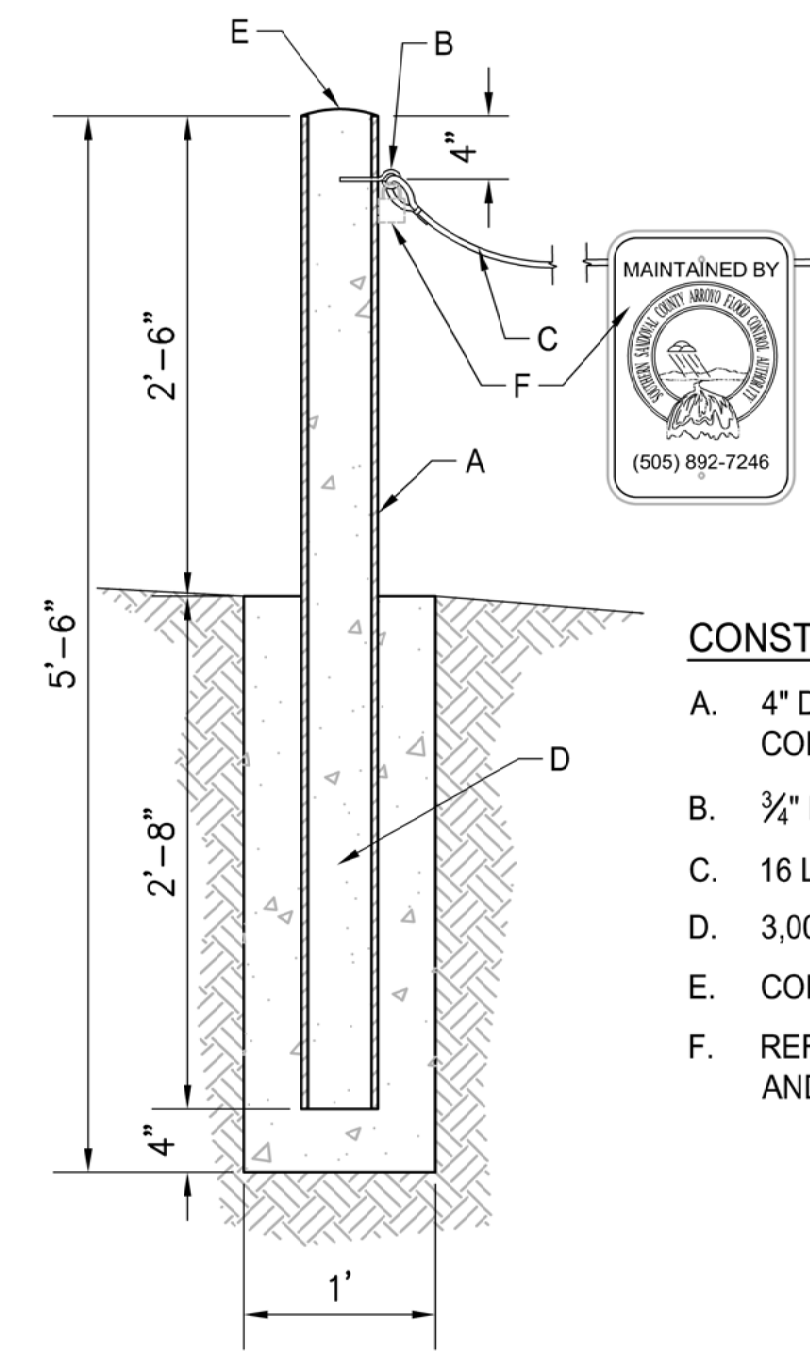
**MAINTENANCE ACCESS & TRAIL TYPICAL SECTION**



Southern Sandoval County  
Arroyo Flood Control Authority

SINGLE PIPE GATE DETAIL  
FOR MAINTENANCE ACCESS

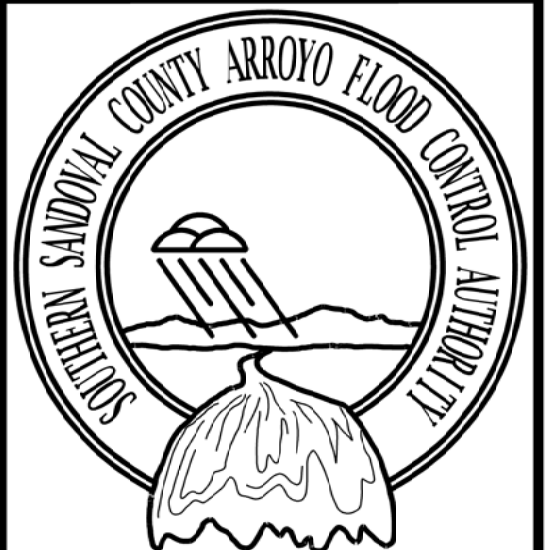
PIPE GATE DETAIL.DWG May 10, 2018



**CONSTRUCTION NOTES:**

- A. 4" DIA. BLACK STEEL PIPE, MIN. 10.79 LBS./FT., CONC. FILLED.
- B. ¼" DIA. EYE BOLT.
- C. 16 LF ⅝" GALVANIZED CABLE W/ LOOP ENDS.
- D. 3,000 PSI AIR ENTRAINED FLY ASH CONCRETE.
- E. CONCRETE ROUNDED AT TOP OF POST.
- F. REFLECTIVE SIGN & LOCK WILL BE PROVIDED AND INSTALLED BY SSCAFCA.

**BOLLARD & CABLE DETAIL**



**Southern Sandoval County  
Arroyo Flood Control Authority**

1041 Commercial Dr. S.E.  
Rio Rancho, New Mexico 87124  
505-892-RAIN (7246)  
505-892-7241 (Fax)  
[www.sscafca.com](http://www.sscafca.com)



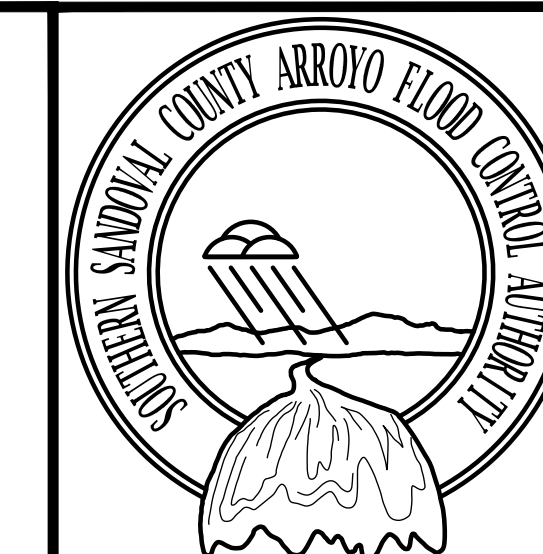
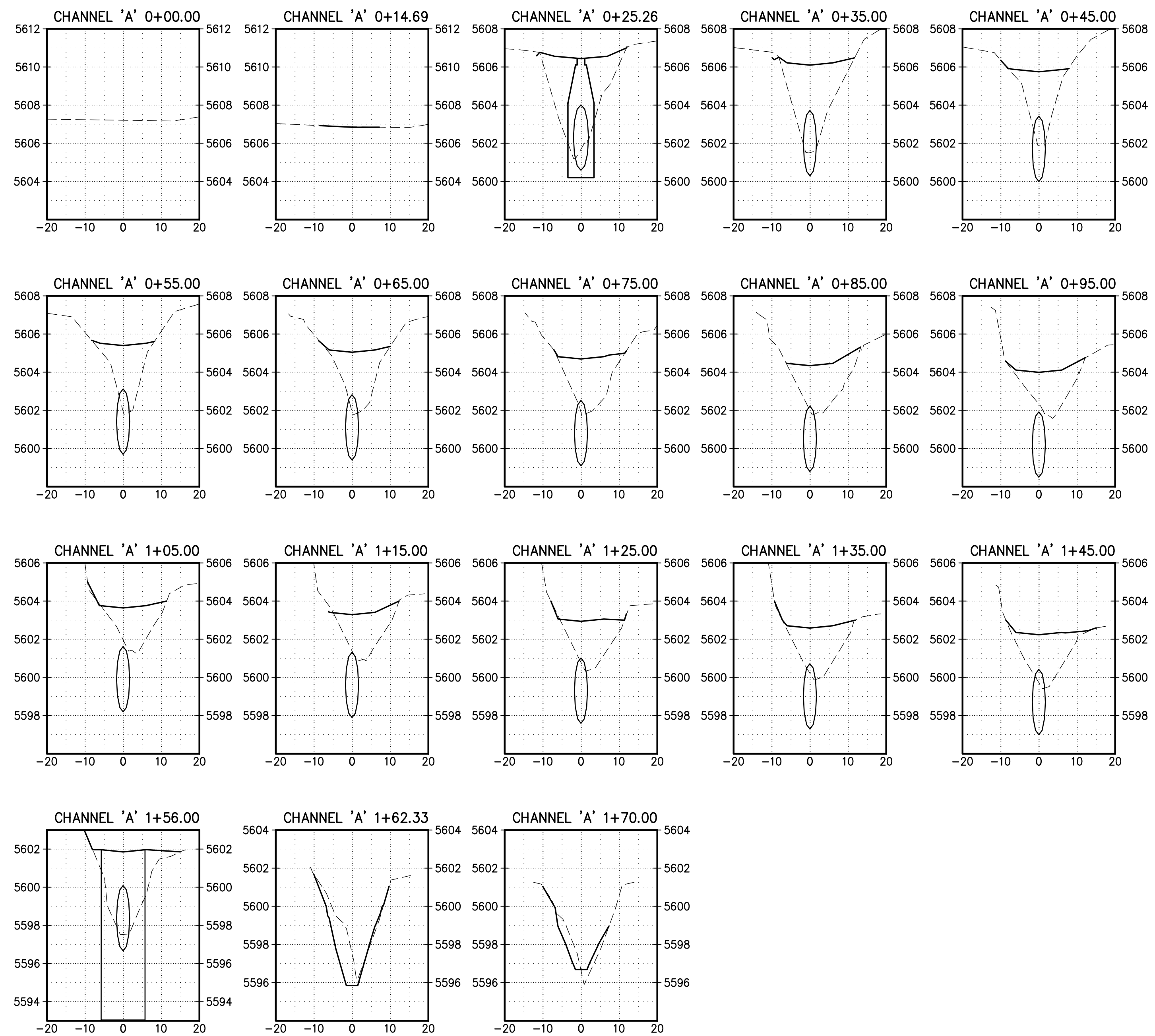
MONTEGO COURT DRAINAGE  
IMPROVEMENTS

DETAILS

REVISIONS & CHANGE NOTICES		
MARK	DESCRIPTION	DATE

PROJECT NO: BL\_P0026  
DESIGNED BY: JB  
DRAWN BY: KLF  
CHECKED BY: AES  
DATE: 8/16/2018

Monday, August 13, 2018 4:34:41 PM - Kathy Feunler  
 C:\naacfo\project\_files\BL\_P0026\AutoCAD\Source\Drawings\BL\_P0026\_C-81USE.dwg



**Southern Sandoval  
 County  
 Arroyo Flood Control  
 Authority**

1041 Commercial Dr. S.E.  
 Rio Rancho, New Mexico 87124  
 505-892-RAIN (7246)  
 505-892-7241 (Fax)  
[www.sscfca.com](http://www.sscfca.com)



MONTEGO COURT DRAINAGE  
 IMPROVEMENTS

CROSS SECTIONS - CHANNEL 'A'

REVISIONS & CHANGE NOTICES		
MARK	DESCRIPTION	DATE

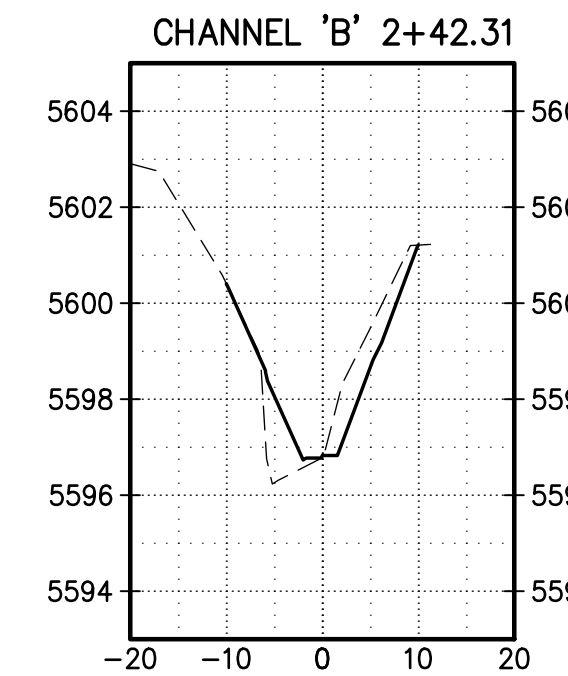
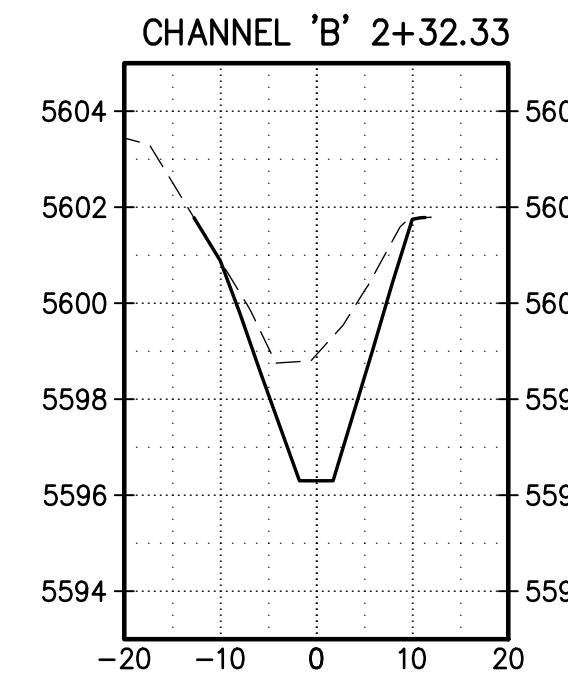
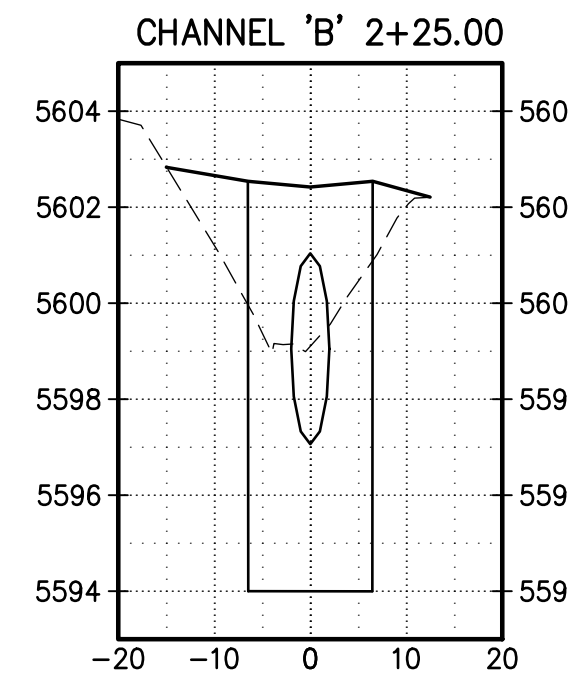
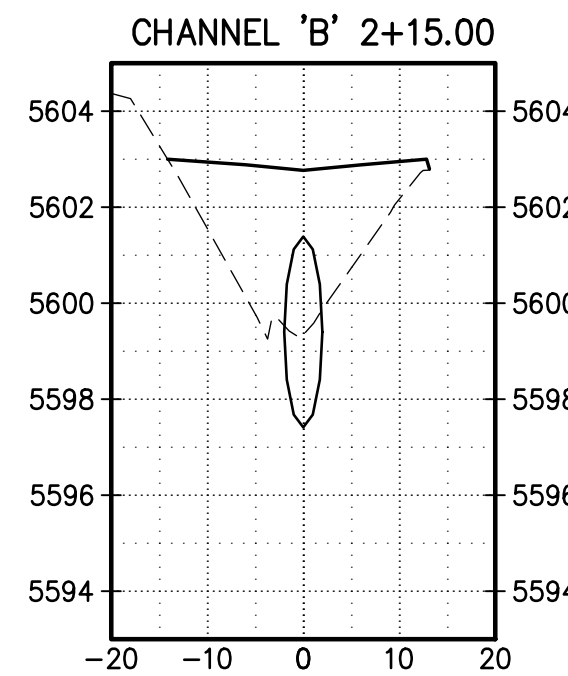
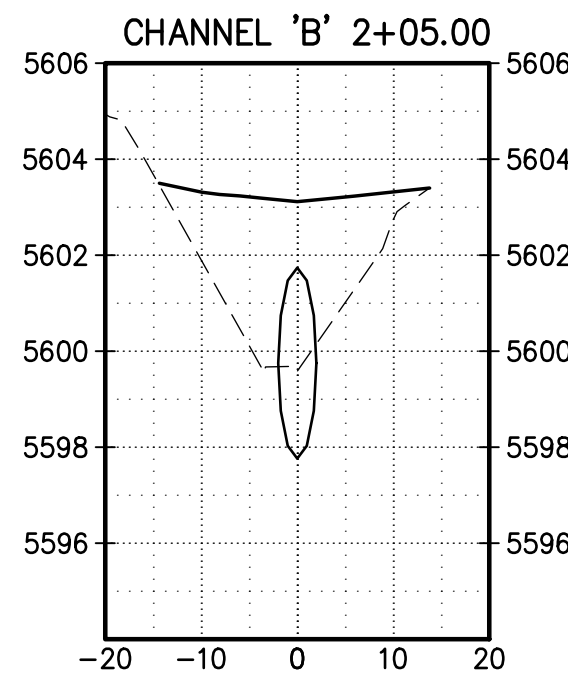
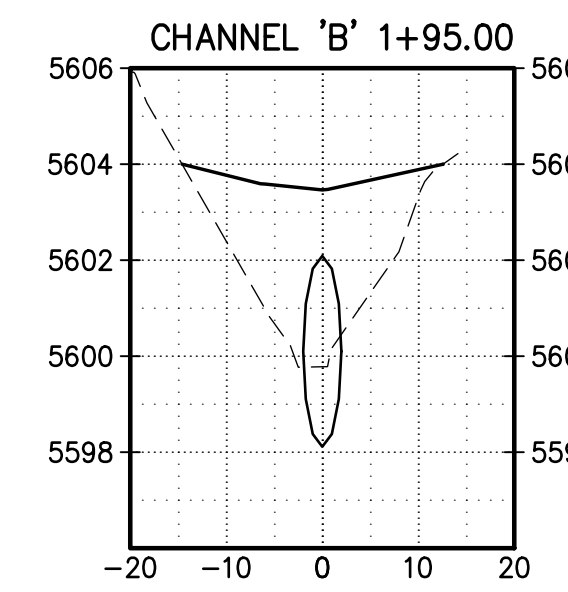
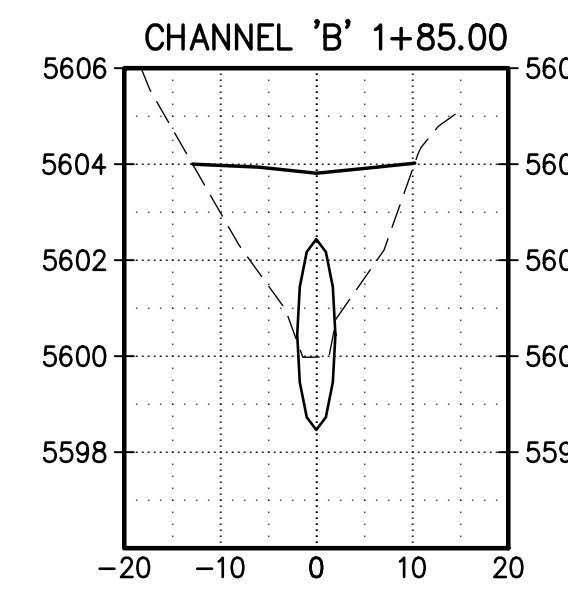
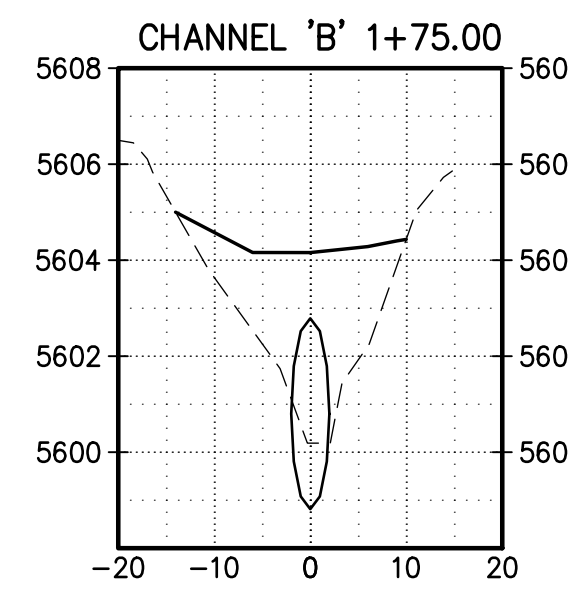
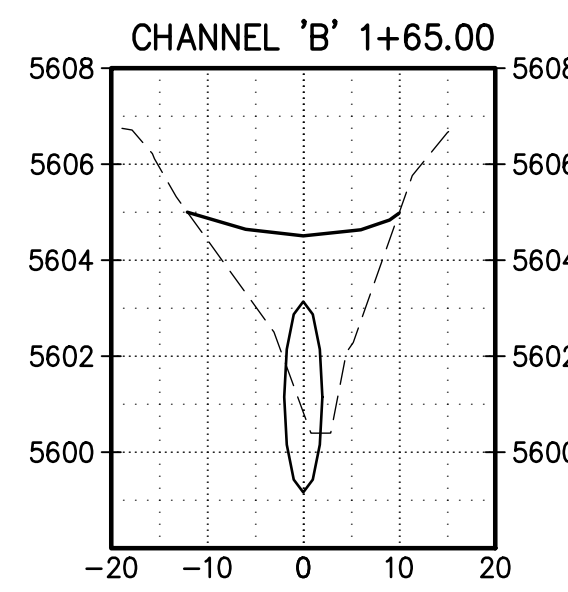
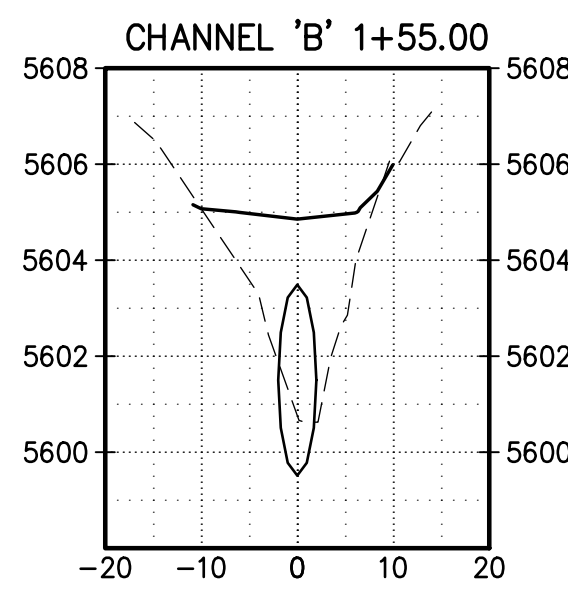
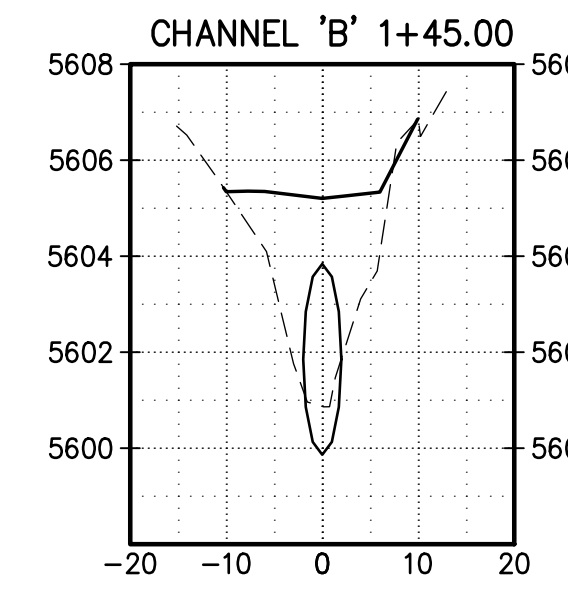
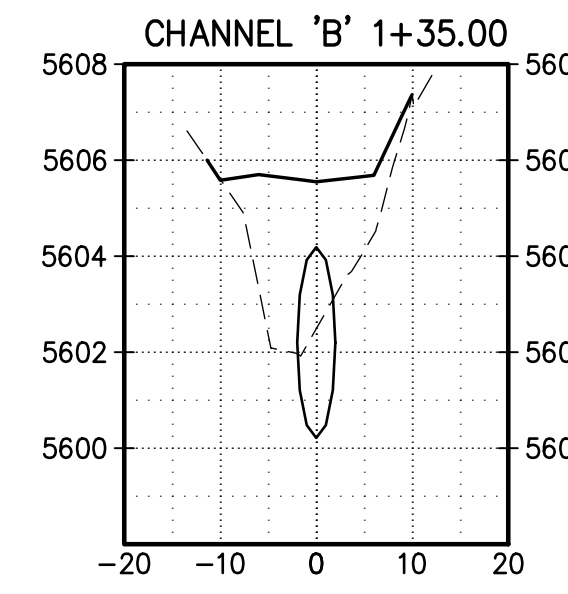
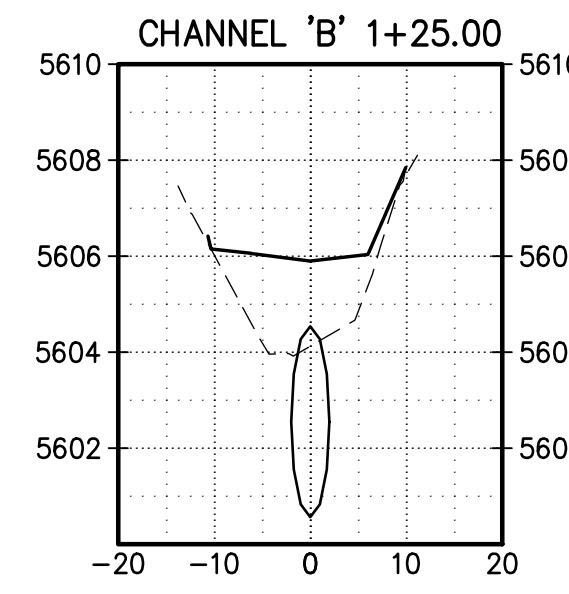
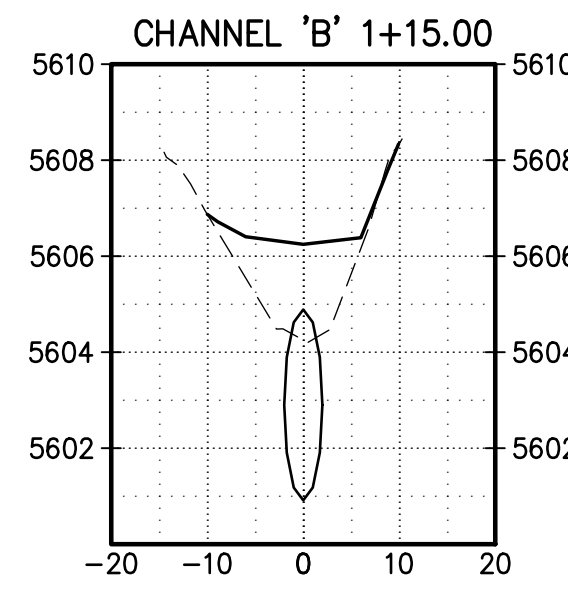
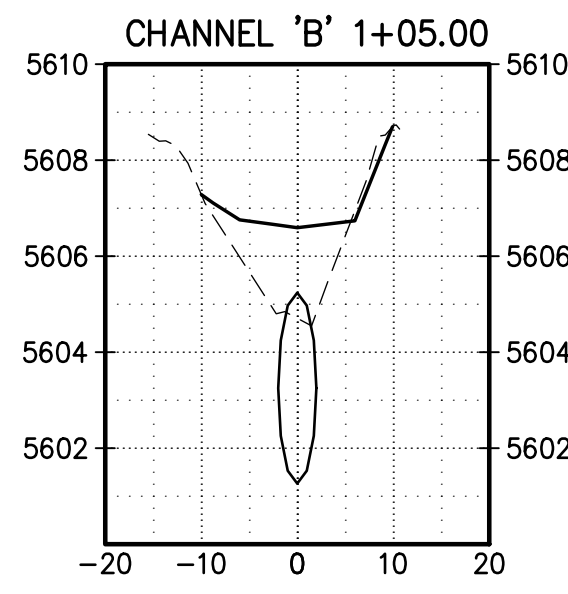
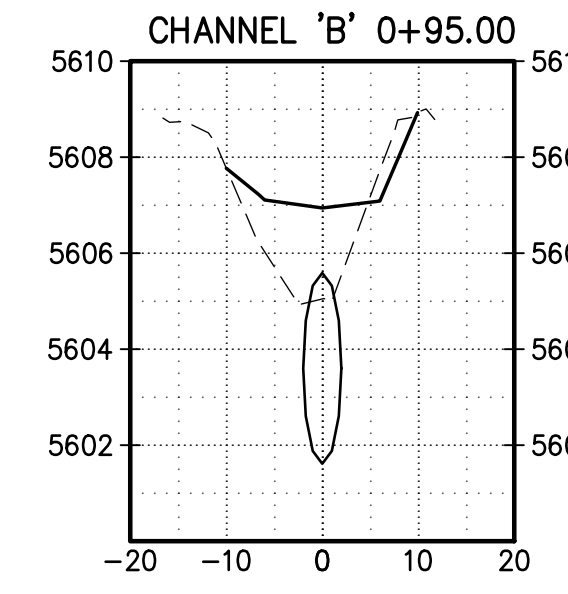
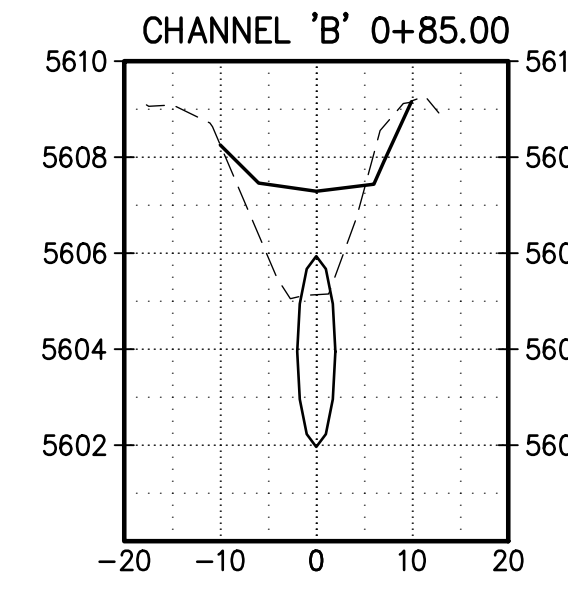
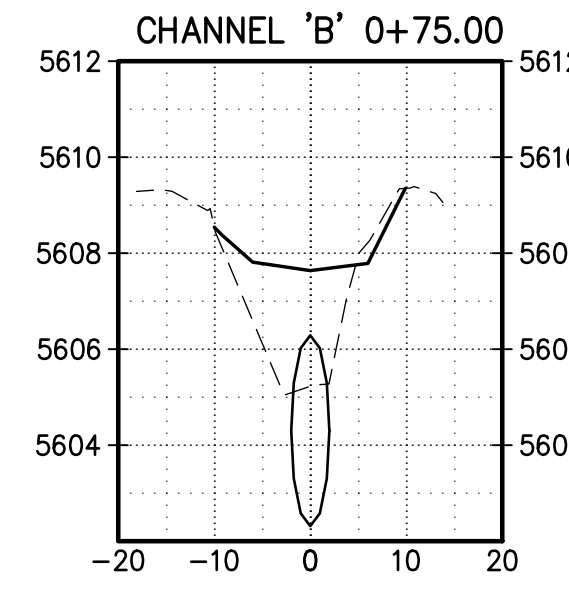
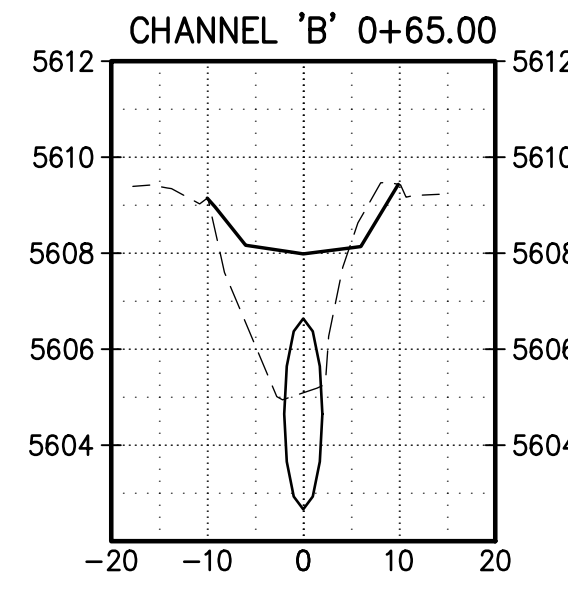
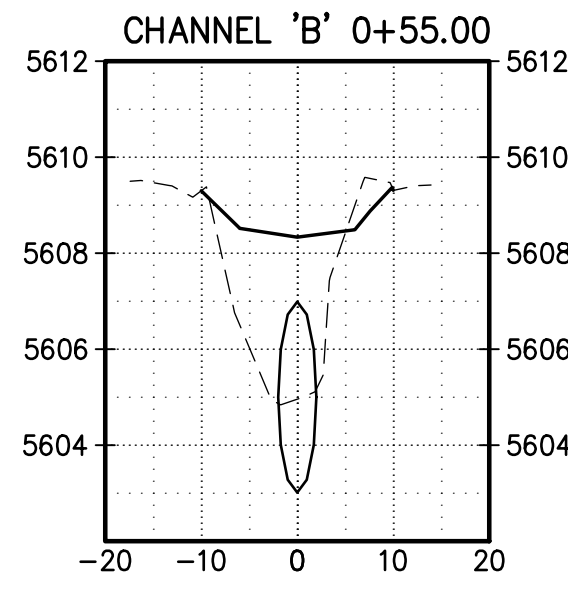
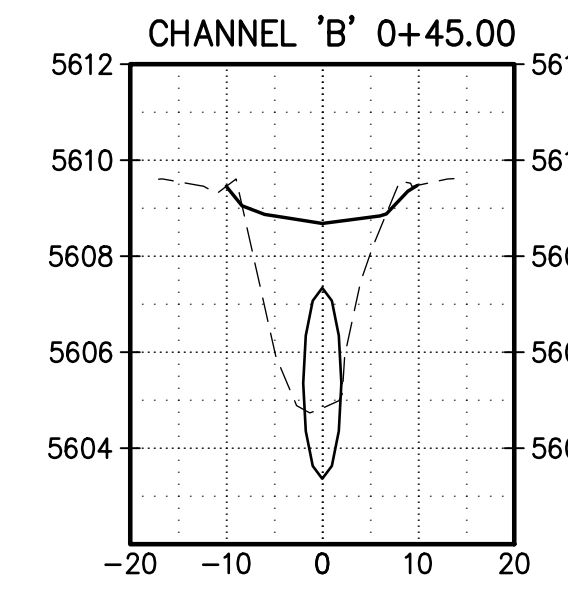
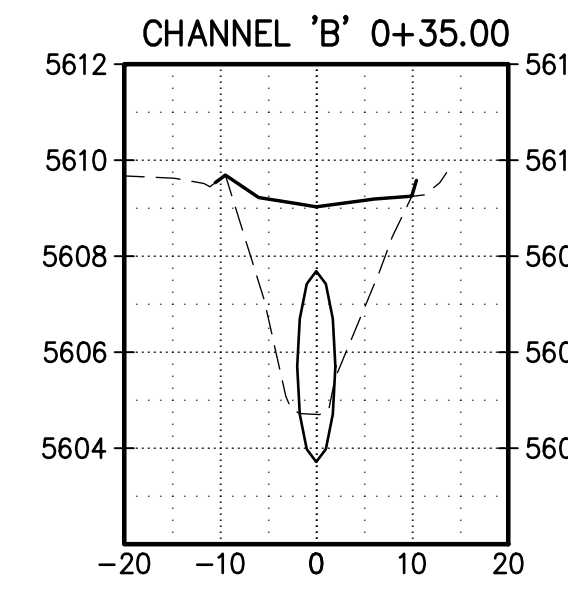
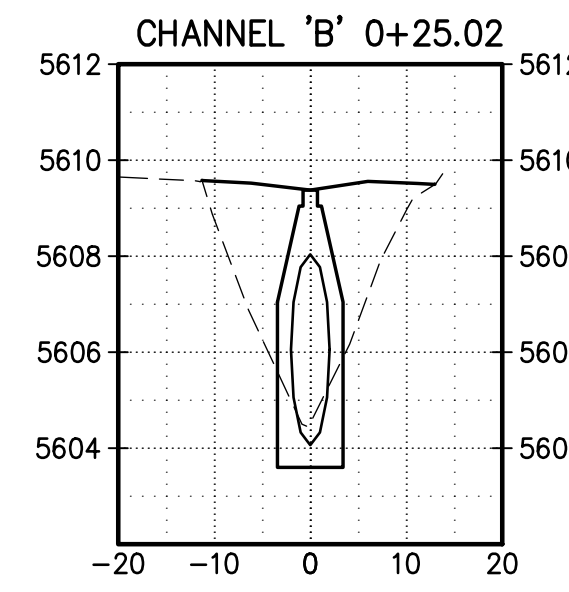
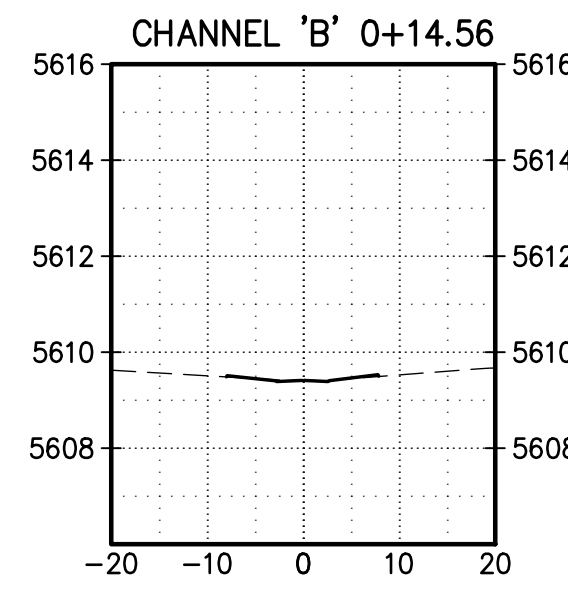
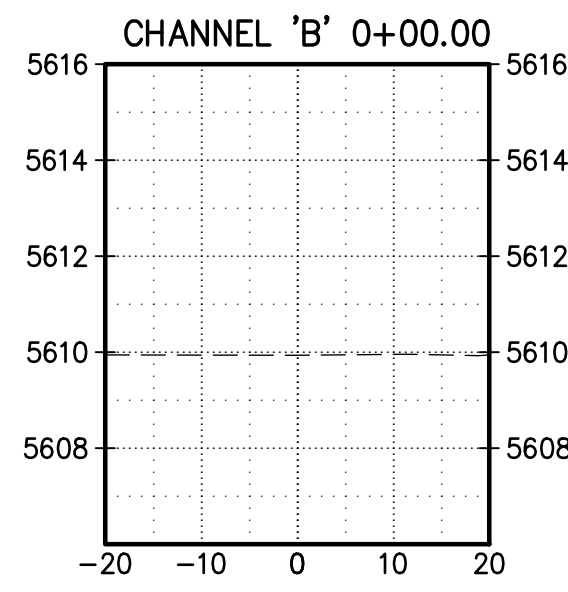
PROJECT NO: BL\_P0026  
 DESIGNED BY: JB  
 DRAWN BY: KLF  
 CHECKED BY: AES  
 DATE: 8/13/2018

7

SHEET 7 OF 8

SCALE: HORIZ. 1"=20'  
 VERT. 1"=4'

Monday, August 13, 2018 4:34:47 PM - Kathy Frenkel  
 C:\naacofc\project\_files\ssca\028\Source\Drawings\B\\_P028\_C-81USE.dwg



**Southern Sandoval  
 County  
 Arroyo Flood Control  
 Authority**

1041 Commercial Dr. S.E.  
 Rio Rancho, New Mexico 87124  
 505-892-RAIN (7246)  
 505-892-7241 (Fax)  
[www.sscfca.com](http://www.sscfca.com)



MONTEGO COURT DRAINAGE  
 IMPROVEMENTS

CROSS SECTIONS - CHANNEL 'B'

REVISIONS & CHANGE NOTICES		
MARK	DESCRIPTION	DATE

PROJECT NO: BL\_P0026  
 DESIGNED BY: JB  
 DRAWN BY: KLF  
 CHECKED BY: AES  
 DATE: 8/13/2018