



*Southern Sandoval County Arroyo Flood Control Authority*  
1041 Commercial Dr. SE  
Rio Rancho, NM 87124  
505-892-7246

# Rainbow Pond and Downstream Channel Project

***Non-Mandatory Pre-Bid Conference***

April 16, 2018 - 10:00 AM

# General Project Information

---

## ▶ Key Personnel

- ▶ SSCAFCA Executive Engineer – Charles Thomas
- ▶ SSCAFCA Procurement Manager – Debbie Casaus
- ▶ SSCAFCA P.M./Engineer of Record – Andrés Sanchez
- ▶ NMED Funding Oversight – Andrea Pollock
- ▶ City of Rio Rancho – Development Services Department

## ▶ Project Purpose

- ▶ To construct a flood control detention pond, outlet works, downstream channel and concrete box culverts to attenuate flood waters and convey them downstream to the existing Rainbow Tributary channel south of Vancouver Rd.

## ▶ Project Funding

- ▶ Water Trust Board (NM Legislative Funds)
- ▶ SSCAFCA Bond Funds
- ▶ No Federal Funds on this project, Local and State only.



# Bid Schedule

---

- ▶ **Deadline to Submit Written Questions – April 19, 5:00 PM**
    - ▶ Submit all questions to Debbie Casaus, Procurement Officer via e-mail at [dcasaus@sscafca.com](mailto:dcasaus@sscafca.com)
  - ▶ **Response to Written Questions – April 23, 5:00 PM**
    - ▶ Will be posted to SSCAFCA's website in the form of an Addendum
  - ▶ **Bid Opening at SSCAFCA – April 26, 3:00 PM**
  - ▶ **Bid Review and Recommendation of Award – April 26 - May 2**
  - ▶ **Issue Notice of Award – May 2, 5:00 PM**
  - ▶ **Receive Signed Agreement from Contractor – No Later Than May 17 @ 5:00 PM**
  - ▶ **Board Approval of Apparent Low Bidder – May 18 Board Meeting @ 9:00 AM**
  - ▶ **Target Construction Start Date – Late May or Early June**
- 



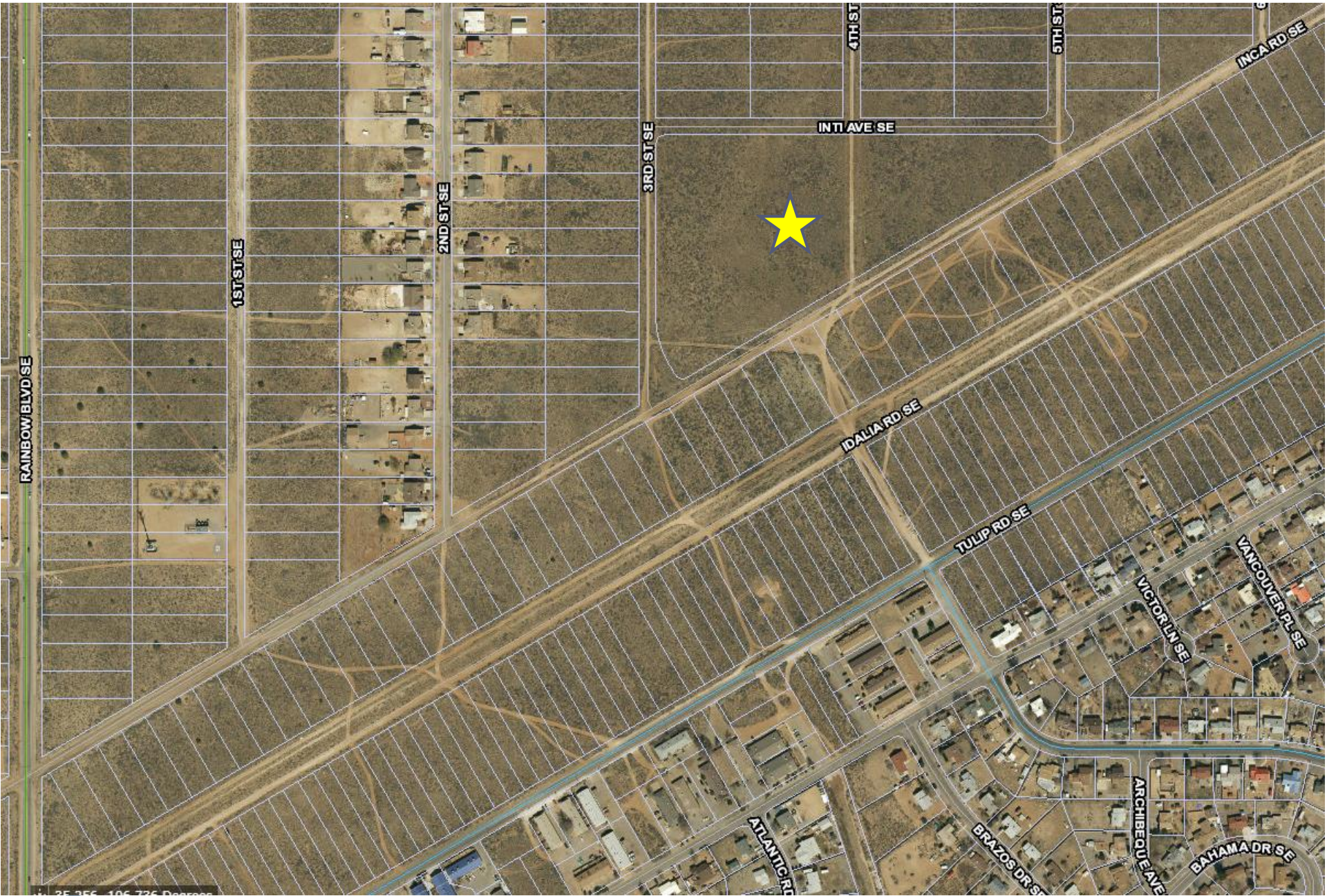
# Location Map

Project Located in Rio Rancho, NM

From Unser Blvd & Southern Blvd.,  
Approx. 2.25 mi. west  
to Rainbow Blvd.

0.5 mile north-east of  
Rainbow Blvd on Inca  
Rd





RAINBOW BLVD SE

1ST ST SE

2ND ST SE

3RD ST SE

4TH ST

5TH ST

INTI AVE SE

INCA RD SE

IDALIA RD SE

TULIP RD SE

ATLANTIC RD

BRAZOS DR SE

ARCHIBUE AVE

VICTORIA LN SE

VANCOUVER PL SE

BAHAMA DR SE



# Main Project Components

---

1. *Approx. 48,000 CY of excavation and 42,000 CY of Fill Construction*
  2. *Placement of approx. 6,500 SY of shotcrete*
  3. *Installation of 199 LF 2-cell 3'x3' CBC Pond Outlet*
  4. *Installation of three 3-cell 3'Hx4'W CBC under Idalia, Tulip and Vancouver Roads, incl. headwalls*
  5. *Placement of approx. 200 LF of 24" RCP*
  6. *Approx. 7,300 LF of 5-strand barbeless wire fencing and Pipe Gates*
  7. *Concrete work incl. valley gutter & header curb*
  8. *Roadway work and appurtenances (subgrade prep, aggregate base course, asphalt, guardrail, signage)*
  9. *Utility work (water line adjust, sewer line encasement, comm)*
- 



# Comments from Engineer

---

- ▶ **Utility Location and Coordination**
  - ▶ Cobb-Fendley conducted subsurface utility locates on select utilities, provided in Plans
  - ▶ Gas Lines – High-Pressure 16” and 20” – Contractor **MUST** coordinate with NMGC
    - ▶ Extreme care must be taken when working in the vicinity of these lines
    - ▶ 4” Slope Paving and Riprap as shown in Plans
  - ▶ Communications Line – Coordinate with appropriate owner
  - ▶ Sewer/Water – City of Rio Rancho
  - ▶ May be other utilities within project boundaries - Contractor is responsible to locate and coordinate with the owner if relocation is required
- ▶ **Do Not Disturb Native Vegetation** – As shown (hatched areas with callout) on Plans
  - ▶ We’ve provided a minimum 10’ offset from slope limits and fence boundaries for access.
- ▶ **Respect and Stay off of Private Properties**
  - ▶ Just because there is a dirt road doesn’t mean it is public



# Comments from Engineer (cont'd)

---

- ▶ **Extremely Flat Slopes**
  - ▶ Finish Grade Tolerances – 0.1' +/- for Channel, Pond Bottom and all CBCs/Culverts
- ▶ **Supplemental Technical Specifications**
  - ▶ Construction Staking
  - ▶ Fill Construction
  - ▶ Geotechnical Report
- ▶ **City of Rio Rancho Permits – Traffic Control Permit, Water Meter for Access to Hydrants, Other as required**
- ▶ **Bid Alternatives – Read “Instructions to Bidders” – Article 19.03**
  - ▶ Project Award will be made based on Base Bid Subtotal ONLY
  - ▶ Bid Alternative unit prices should match those used for the same items in the Base Bid
  - ▶ Owner will select Bid Alternatives at their discretion once the Successful Bidder has been determined





# Misc. / Questions

---

- ▶ SSCAFCA Staff and/or Consultant will be providing construction oversight on project
- ▶ City of Rio Rancho Construction Observation?
- ▶ State Funding Requirements
  - ▶ Submit Certified Payroll, inspectors may conduct field interviews to verify
  - ▶ Must comply with State Wage Rate Decision
  - ▶ Workforce Solutions Website Registration
- ▶ SSCAFCA does not maintain a Bidder's List
- ▶ The Contractor is responsible for checking the website regularly for any updates/changes to bid documents
- ▶ All changes to currently posted bid documents will be issued through an Addendum, SSCAFCA will have all Addenda posted on or before April 23, 2018
- ▶ Comments from Fiscal Services/Procurement
- ▶ Comments from other SSCAFCA Staff
- ▶ Comments from City of Rio Rancho, NMED, Other?
- ▶ *Contractor Questions?*
- ▶ *Please sign-in if you haven't already!*

All Questions After This Meeting:

Debbie Casaus, Procurement Officer

---

[dcasaus@sscafca.com](mailto:dcasaus@sscafca.com)