

BARBLESS WIRE FENCE DETAIL

SCALE: NONE

- NOTES:
1. Corner Brace installation will be required at all changes in direction.
 2. All Corner Brace posts and Cross Fence Brace posts to have 18" diameter, 3,000 psi, concrete footing.
 3. The Standard Specifications for this Price Agreement are the New Mexico Standard Specifications for Public Works Construction (NMAPWA), 1987 Edition, as amended through April 20, 1994, published by the New Mexico Chapter of the American Public Works Association.

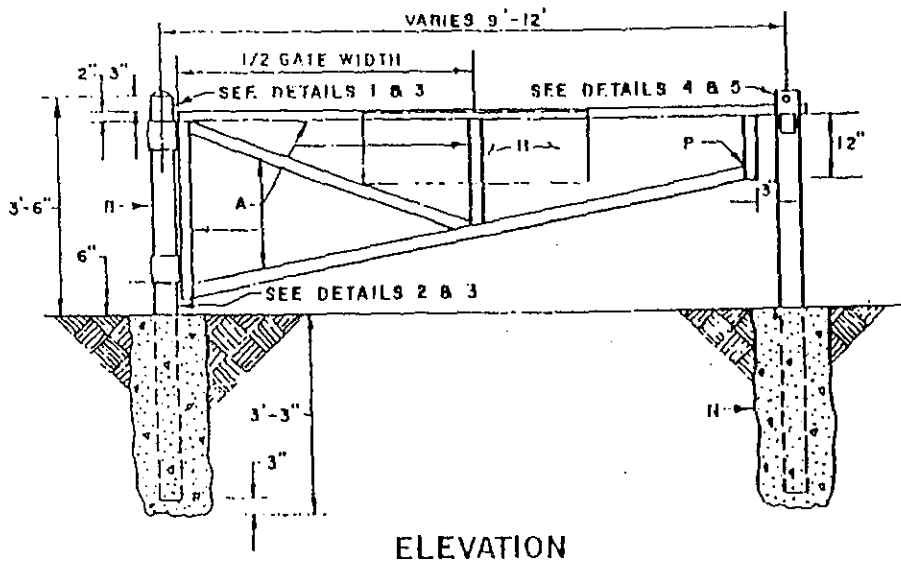
GENERAL NOTES:

1. ALL WELDED AND CUT AREAS TO BE CLEANED THOROUGHLY WITH A WIRE BRUSH AND OR SAND BLAST AND REGALVANIZED.
2. REGALVANIZING SHALL BE WITH SIERWIN WILLIAMS ZINC CLAD 7 PRIMER OR EQUAL.

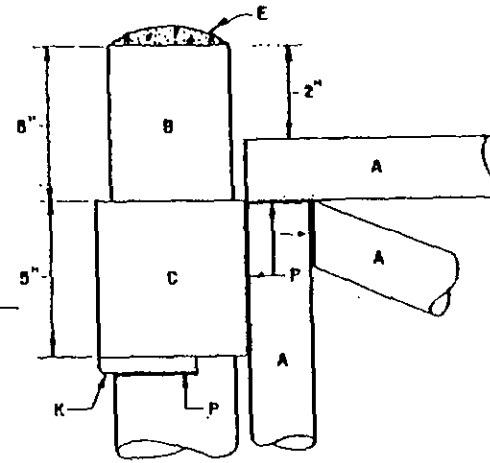
CONSTRUCTION NOTES:

- A. 2" NOMINAL DIA. GALV. PIPE, MIN. WEIGHT PER FT. 3.65 LBS.
- B. 4" DIA. BLACK STEEL PIPE, MIN. 10.79 LBS./FT. CONC. FILLED, ~~PAINT W/3 COATS ALUM. PAINT~~
- C. 5" DIA. BLACK STEEL PIPE, MIN. 14.62 LBS./FT. ~~PAINT W/3 COATS ALUM. PAINT~~
- D. $\frac{1}{4}$ " BUTT WELD ALL AROUND.
- E. CONCRETE ROUNDED AT TOP OF POST.
- F. $\frac{3}{8}$ " X $4\frac{1}{4}$ " DIA. STEEL PLATE.
- G. $\frac{3}{8}$ " STEEL PLATE FLANGE.
- H. REFLECTIVE SIGN STATING, AUTHORIZED VEHICLES ONLY, WILL BE PROVIDED AND INSTALLED BY ~~THE~~ SBCA/CA
- J. STOP CONC. IN PIPE AT THIS POINT.
- K. $\frac{1}{2}$ " SQ. STEEL BAR FOR HINGE SUPPORT. POSITION BAR TO ALLOW UNRESTRICTED GATE ROTATION THROUGH ENTIRE SWING OF GATE OPENING.
- L. 1" DIA. FINGER HOLE.
- M. MAKE A 3" X 4" CUT IN PIPE.
- N. 3,000 PSI AIR ENTRAINED FLY ASH CONC.
- P. WELD ALL 2" PIPE & FIXTURE CONNECTIONS WITH $\frac{3}{8}$ " FILLET ALL AROUND.
- Q. $1\frac{1}{2}$ " X $\frac{3}{8}$ " SLOT FOR STEEL PLATE FL.

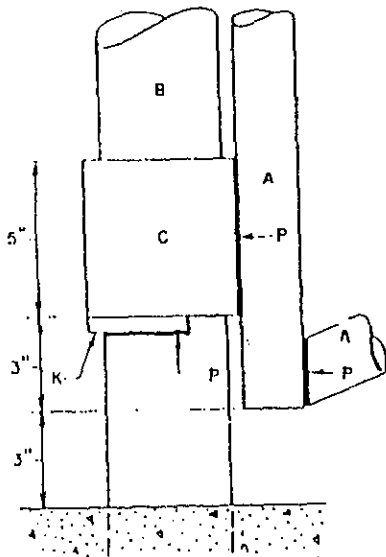
NOTE: After priming, paint all pipe, hinges, locking mechanism, etc. with two (2) coats of OSHA Safety Blue



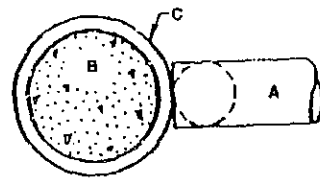
ELEVATION



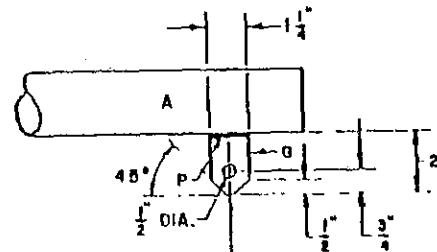
DETAIL 1



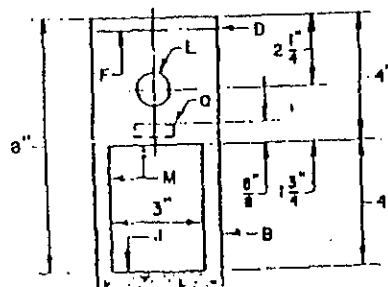
DETAIL 2



DETAIL 3



DETAIL 5



DETAIL 4

REVISIONS

NM APWA

DRAINAGE

PIPE GATE DETAIL

DWG. 2251

AUG 1986